



Bradwell Parish News

Issue: Summer 2022



Parish magazine covering

**Heelands, Bradwell Village, Bradwell Common,
Bradwell Abbey & Rooksley**

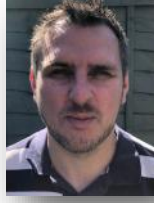
Bradwell Parish Councillors



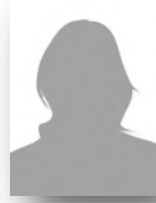
Leon Gilpin
Heelands
Chairman



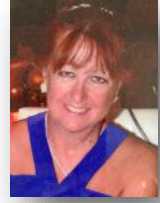
Marie Bradburn
Heelands



Peter Brant
Bradwell Common



Vacancy
Heelands



Caroline Godfrey
Bradwell Village



James Alexander
Bradwell Village



Robin Bradburn
Heelands



Rex Exon
Bradwell Village



David Evans
Bradwell Common

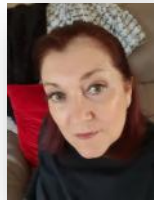


Rose Davy
Bradwell Common
Vice Chairman

Bradwell Parish Staff



Philip Farquharson
Parish Clerk



Teresa Wales
Assistant Clerk



Karen Evans
Assistant Clerk



Peter Baldwin
Grounds Assistant



Peter Stamp
Grounds Person



Tony Hull
Caretaker

Office Contact Details

21 Glovers Lane, Heelands, Milton Keynes, MK13 7LW

Tel: 01908 321285; Email: clerk@bradwell-pc.gov.uk; Website: www.bradwell-pc.gov.uk

Office Hours

Wednesday & Friday : 10.00am – 1.00pm

Photographs courtesy of Rob Jones



Hello all residents of Heelands, Bradwell Common and Bradwell Village. As my first column in post, there is so much to report in such a short time, it is hard to know where to start! I began in

mid-March. An initial word of thanks for the welcome I have received from residents and Councillors on the Parish Council.

Although there is so much work to be done here at the Parish Council, it has been a pleasant first two months in post, and full of exciting projects. I always wanted an interesting job – careful what you wish for! In terms of projects, we have the Bradwell Common Community Centre on the horizon, and communications with MK Council over this have begun and hopefully this will conclude over coming months, with the aim of safeguarding a community provision, a place for local groups to meet at affordable prices.

The wildflower meadow is maturing fast, and the pond is finally filling up with natural rainwater, full of all the minerals contained in rainwater that is essential to the creation of a balanced ecosystem. Fingers crossed for frogs and newts by next summer. But with the close proximity of the Loughton Brook, wetland wildlife should appear quickly. The allotments are all rented out, and the Parish Council has been in hot negotiations with the allotment association in Heelands, helping with storm damage to remove a large ash tree which came down.

Philip Farquharson, Parish Clerk

Citizens Advice Milton Keynes

The CA are delighted to announce that they have restarted their fortnightly outreach sessions at Bradwell Parish offices, 21 Glovers Lane, Heelands MK13 7LW. The sessions will run on Wednesdays between 10:00am–13:00pm. These appointments will be face to face and are pre-booked only. To book an appointment please follow this link and complete the form <https://www.miltonkeynescab.org.uk/bradwell-parish-council/> or call 0808 278 7991 (freephone number).

Please do get in touch to book!

Citizens Advice would like to thank Bradwell Parish Council for funding the service for Bradwell Parish residents.



Parish Grants

Did you know?

Bradwell Parish Council has a fund for awarding grants to organisations, (regrettably not to individual people), who are doing good work which directly benefits residents in Bradwell Common, Bradwell Village and Heelands.

We have had applications for all types of things from defibrillators to music projects to distraction equipment for nurses providing care in the community.



We try and put all grant updates in the newsletter so that residents can see what's going on in the parish.

So if you are a group leader of and need some help with the purchasing of equipment please do get in touch.

Please email clerk@bradwell-pc.gov.uk



Parish Council Meeting Dates

All meetings take place at Heelands Meeting Place, Heelands

Monday 4 July	7.30pm
Monday 1 August	7.30pm
Monday 5 September	7.30pm
Monday 3 October	7.30pm
Monday 7 November	7.30pm
Monday 5 December	7.30pm

Articles & Advertisements

Bradwell Parish Council welcomes articles and community information for inclusion within the newsletter. Please contact the Assistant Clerk: communications@bradwell-pc.gov.uk if you would like to discuss an article for future editions.

The Parish Council reserves the right to refuse any advertisement. The Parish Council does not endorse any services, products or political parties advertised in this newsletter and does not take any responsibility for the accuracy of articles provided to them from external sources. Deadlines and charges for advertising in the parish magazine are below:

Article and Advert deadline for the July issue: **15 September 2022**

Quarter page (92mm x 65mm): Charities (local): free; Charities (other): £25; Commercial: £50

8th page (92mm x 65mm): Charities (local): free; Charities (other): £12.50; Commercial: £25

All articles and requests for advertising should be directed to the Assistant Clerk: communications@bradwell-pc.gov.uk

For further information about Bradwell Parish Council please visit our website: www.bradwell-pc.gov.uk

Sports News

Bradwell Bowls Club

The Open Day, held on Sunday 8 May was a huge success! Lots of people came to try their hand at Bowls, aged from 8 to 80! We were delighted with the turnout. The weather certainly helped as it was a glorious sunny day as you can see from the photographs. The future certainly looks bright for the club!

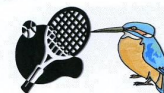


Old Bradwell United Football Club

Old Bradwell United are the new league champions of the Spartan South Midlands League Division Two! After several seasons of just falling short and the disappointment of recent impacted seasons due to Covid this was a great achievement by the team. It is the club's first league title since 1981. Interestingly, the trophy was lifted back then by current captain Shaun Ennis' father, Mick. Well done to manager David Keene and the players on a superb achievement. We now break for the close season with the aim to retain the title next season. Thank you to all our supporters.



Old Bradwell Tennis Club



With the sun coming out the tennis club has been busy.

With funding from Bradwell Parish Council we were able to host our first Children's Easter Tennis Coaching course run by Jason Fairhurst, our tennis coach, to non members and members from within the whole of the Parish. The funding enabled us to offer complimentary coaching, to buy the appropriate racquets and balls for each group plus fund the coaching fees. There were three age groups: Red group 5–8 years, Orange group 8–10 years and Green group 10 years and above.

Red group were relatively new to the game of tennis so were shown basic tennis skills: how to hold the racquet correctly; where to put your feet and body movement so that the ball will be



hit correctly; to hit the ball with a forehand and back-hand. On the second day Jason helped the children to secure the knowledge they learnt on the first day.

The Orange and Green groups were made up mostly of children who had some previous tennis knowledge so

we built on this.



The children worked in pairs hitting mainly in the service boxes, over the net and attempted to try to rally on both sides of the body using forehand and back-hand. Jason made

the lessons fun and fast going so that the children were completely engaged.

This was our first Easter tennis club course and we felt it was a great success!

Sadly the quiz had to be postponed as our quizmaster had Covid, it was rearranged and a great time was had by all!

Correction & Apology

In the last issue the winner of the photographic competition was incorrectly credited but the correct image was on the front cover and was credited were correctly. Please accept our apologies for any confusion or distress caused by this error.

Community News

Milton Keynes Museum

Step back to the 1940s with Milton Keynes Museum

Despite being an era famous for ration books, there will be no rationing of entertainment at Milton Keynes Museum's upcoming 1940s event this September 3 & 4, when families will be able to step back in time and absorb all the sights and sounds from the decade.



The Oxfordshire Home Guard will be on hand, a Home Front Village will be available for inspection, and you'll learn more about the role played by the WVS (Women's Voluntary Service).

RAF and Red Cross re-enactors will wander among you, and a display of items from the Merchant Navy will catch your attention.

Learn how people made the most of their free time by 'holidaying at home', a display of wartime wedding dresses will bring a little glamour to the event, and singers Lola Lamour and Johnny Victory will ensure you hit the dance floor.

But war or not, there is no excuse for not keeping a tidy home – Mrs Skivvy will share tips on keeping things spick and span, and traders will invite you to splash the pounds, shillings and pence with them!

Visit miltonkeynesmuseum.org.uk for more details closer to the event.



GET MOO-VING FOR Willen Hospice this summer!

Join the Summer of Moo and support your local Hospice. Enter individually or get group discount!

Midnight Moo, Friday 15 July, Midsummer Place, Central MK, 10pm

Join the party atmosphere and walk our 5 or 10 mile route around MK at night. Entry is £20 and includes a t-shirt and medal!

Mini Moo, Sunday 7 August, Willen Lake North (outside the Hospice), 10.30am

Get your children active this summer! Scoot, run or walk around Willen Lake North. Entry is £10 and includes a cap!

Help us reach our fundraising goal of £125,000. Sign up for the Summer of Moo – June to August at willen-hospice.org.uk

Another exciting way to get involved is to do our Moo dance! Step-by-step instructions are available online at willen-hospice.org.uk, so you can learn the dance and video you, a team, or class doing it! Post the video to social media, tag us and use #ShowUsYourMooves and we will share it, or you can email the video to us at marketing@willen-hospice.org.uk.

Our mascot, Florence Moo, is also going on tour this summer! If you would like her to visit and do the Moo dance with you then send us an email and we will organise this with you.

Bradwell Church

The church is 800 years old next year and we are starting to plan how to celebrate. This article is to generate interest for the upcoming anniversary and to make a plea for stories and photographs, and depending on the response we will see how best to display them in church.



For further information about Bradwell Parish Council please visit our website: www.bradwell-pc.gov.uk

Parish Summer Events

Week 1	Time	Place	Activity
Monday 25 July	10.00–11.00	Heelands South Field	Basketball under 12
Monday 25 July	11.00–12.00	Heelands South Field	Basketball over 12
Tuesday 26 July	9.30–12.00*	Heelands South Field	MK Play Association
Wednesday 27 July	2.00–4.30	Bradwell Common Local Play Area	MK Play Association
Thursday 28 July	2.00–4.30	Bradwell Village King George's Field	MK Play Association
Friday 29 July	3-30–4.30	Heelands Rangers Sports Field	Football
Week 2			
Monday 1 August	10.00–11.00	Heelands South Field	Basketball under 12
Monday 1 August	11.00–12.00	Heelands South Field	Basketball over 12
Tuesday 2 August	2.00–4.30*	Heelands South Field	MK Play Association
Wednesday 3 August	2.00–4.30	Bradwell Common Local Play Area	MK Play Association
Thursday 4 August	2.00–4.30	Bradwell Village King George's Field	MK Play Association
Friday 5 August	3-30–4.30	Heelands Rangers Sports Field	Football
Week 3			
Monday 8 August	10.00–11.00	Heelands South Field	Basketball under 12
Monday 8 August	11.00–12.00	Heelands South Field	Basketball over 12
Tuesday 9 August	9.30–12.00*	Heelands South Field	MK Play Association
Wednesday 10 August	2.00–4.30	Bradwell Common Local Play Area	MK Play Association
Thursday 11 August	2.00–4.30	Bradwell Village King George's Field	MK Play Association
Friday 12 August	3-30–4.30	Heelands Rangers Sports Field	Football
Week 4			
Monday 15 August	10.00–11.00	Heelands South Field	Basketball under 12
Monday 15 August	11.00–12.00	Heelands South Field	Basketball over 12
Tuesday 16 August	9.30–12.00*	Heelands South Field	MK Play Association
Wednesday 17 August	2.00–4.30	Bradwell Common Local Play Area	MK Play Association
Thursday 18 August	2.00–4.30	Bradwell Village King George's Field	MK Play Association
Friday 19 August	3-30–4.30	Heelands Rangers Sports Field	Football
Week 5			
Monday 22 August	10.00–11.00	Heelands South Field	Basketball under 12
Monday 22 August	11.00–12.00	Heelands South Field	Basketball over 12
Tuesday 23 August	2.00–4.30*	Heelands South Field	MK Play Association
Wednesday 24 August	2.00–4.30	Bradwell Common Local Play Area	MK Play Association
Thursday 25 August	2.00–4.30	Bradwell Village King George's Field	MK Play Association
Friday 26 August	3-30–4.30	Heelands Rangers Sports Field	Football

All these sessions are provided to you free of charge (paid for by Bradwell Parish Council).

The play sessions need to be booked in advance by visiting Making Play Happen | Milton Keynes Play Association (mkpa.co.uk). Basketball sessions need to be booked in advance by visiting 5 On It Foundation. Please just turn up for the Football sessions.

* Please note the change of times for these sessions



For further information about Bradwell Parish Council please visit our website: www.bradwell-pc.gov.uk

Parish News

Heelands Meeting Place

If you would like to book Heelands Meeting Place for a party/event, please do get in touch with us. The hire charges can be found on our website. We currently have spaces at the weekend and on Thursday evenings.

T: 01908 321285 E: admin@bradwell-pc.gov.uk



Robin's Children's Centre

As all services return to normal we are looking forward to Summer 2022. We were closed during the pandemic and since reopening last Summer we have welcomed our families back and look forward to parents with children under 5 accessing the Robins Children's Centre.



Our Programme is available online and we post daily updates on The Robins Children's Centre Facebook page. All families living in Bradwell, Heelands, Bradwell Abbey, Great Holm, Two Mile Ash and Wymbush are able to attend sessions and access Family support, Two year funding advice and Employment and Training support. Please note all Children and Family Centres provide services for their local reach area families only.

You are welcome to drop in and pick up our programme. For further information please email the Robins @milton-keynes.gov.uk or ring the centre on 01908 318758.

Bradwell Village School

We have had another successful term here at Bradwell Village School. Our children had a very 'egg-citing' opportunity to take part in our Easter egg competition. We were incredibly impressed with the time and effort that the children put into designing and making their entries and the judges had a tough job deciding on the winners. It was lovely to see the creative side of our children come out and how they used eggs to create different scenes including netball and basketball teams, an Egg Sheeran concert, the Eggs Factor, Sonic the Egghog and many, many more wonderful ideas.

We would also like to congratulate our fabulous netball team who took part in a tournament at Hazeley Academy last term. They were enthusiastic and resilient, demonstrating wonderful team work skills. We are incredibly proud of them all!



SIMPLY FORWARD – Friendship Group

We are a social group for mature people living in Milton Keynes and surrounding areas who are widowed, divorced, separated or single and wish to move 'Simply Forward'.

Our group enjoys a diverse range of social activities, interests and friendships. There are currently 61 members. We enjoy meeting up for meals and breakfasts out, trips away, cinema, theatre & art gallery visits, walks and much more. Activities are arranged by any group member. You can join in as much or as little to suit you.

We meet for breakfast at IKEA every Thursday at 9.30am onwards, sitting along the wall just before the toilets. Every Saturday at 10am we meet in the car park at The Giffard pub in Giffard Park. We go for a walk, then have breakfast together in the pub. If the weather is inclement, or we don't fancy a walk, we just have breakfast. We have a get-together at Dobbies restaurant, the first Monday in the month at 2.30. There are four larger get-togethers at Woburn Village Hall throughout the year.

If you would like to meet cheerful people and make new friends, please join us at one of the regular get-togethers or contact our Chairperson, Gill Jones. We will be very happy to meet you.

Gill Jones: 07876 680983; gill.jones@strudwicks.com

For further information about Bradwell Parish Council please visit our website: www.bradwell-pc.gov.uk

Parish Grants

MK Hospital Charity

"The incredible funding provided by Bradwell Parish Council has enabled the Milton Keynes Hospital Charity to purchase Buzzy Bees and a projector for the paediatric community nursing team to offer children a distraction and a less painful experience when having a medical procedure using a needle.

The community nurses have said the Buzzy Bees help to administer deep intramuscular injections to our young oncology and rheumatology patients as well as extract blood for blood tests. They have been extremely helpful in supporting children and have prevented painful experiences as much as possible, thus preventing a potential needle fear developing.

Many of the patients we use the buzzy bee on require injections weekly for very long periods of time. By using the buzzy bee it makes the procedure less painful, less distressing and helps to reduce the dread of the appointment for the children each week. This in turn helps the parents, who can often find the injections for their children upsetting, despite knowing it's in their best interests and if the child is less distress, the parents feel more confident in taking over the child's injections, giving them more control over their child's treatment and care.

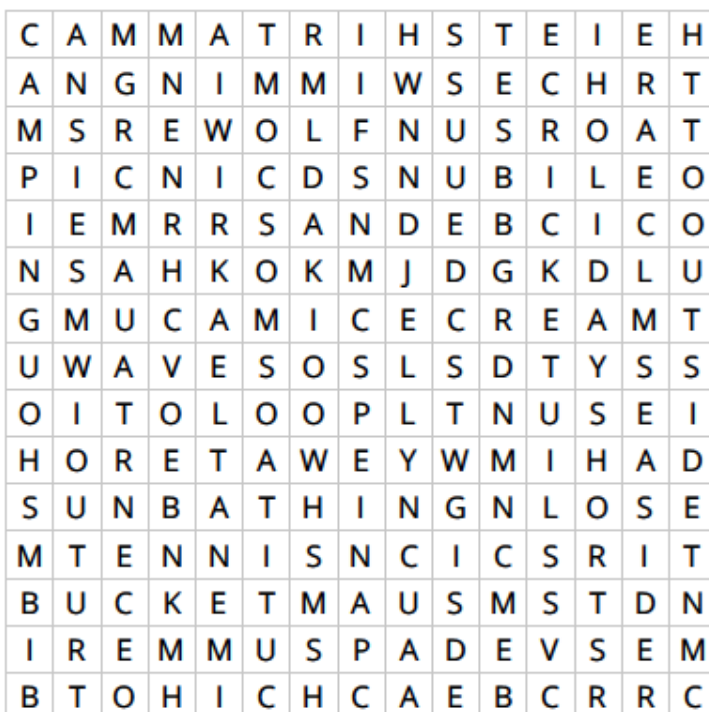
Something that can seem very small to some, has the biggest impact on others. Offering this support is priceless and couldn't have been done without the generosity of Bradwell Parish Council."



Did you know?

Bradwell Parish covers 733.1 acres or 296.9 hectares

Summer Wordsearch



BEACH	OUTSIDE	SUN
BUCKET	PICNIC	SUNBATHING
CAMPING	POOL	SUNFLOWER
CRICKET	SAND	SWIMMING
HOLIDAY	SEASIDE	TENNIS
HOT	SHORTS	TSHIRT
ICECREAM	SPADE	WATER
JELLY	SUMMER	WAVES

