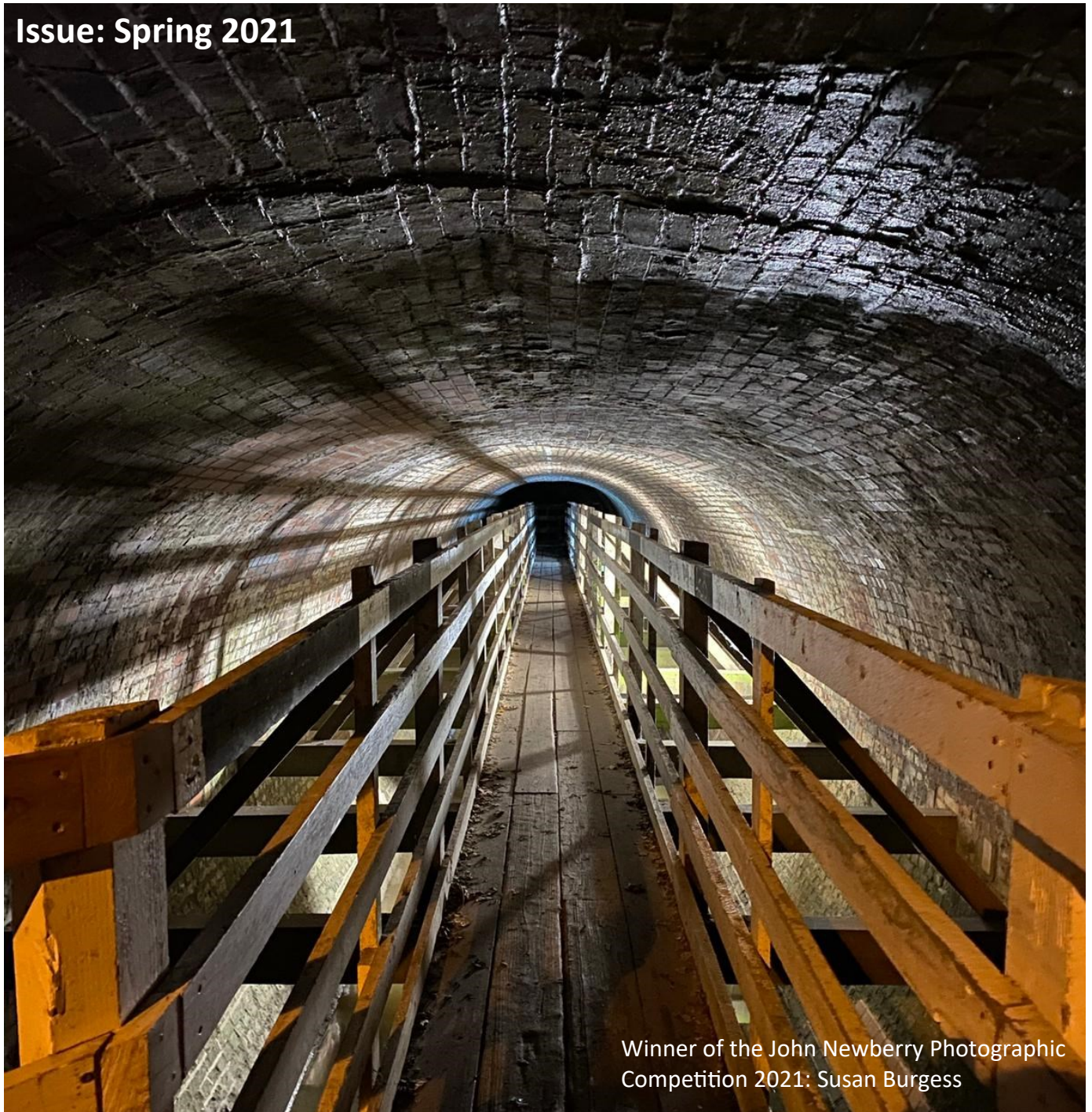


Bradwell Parish News

Issue: Spring 2021



Winner of the John Newberry Photographic
Competition 2021: Susan Burgess

Parish magazine covering

Heelands Bradwell Village Bradwell Common
Bradwell Abbey Rooksley

Bradwell Parish Councillors



Leon Gilpin
Heelands
Chairman



Marie Bradburn
Heelands



Harold Atkins
Heelands



Jenny Jones
Heelands



Caroline Godfrey
Bradwell Common



James Alexander
Bradwell Village
Vice Chairman



Robin Bradburn
Bradwell Village



Rex Exon
Bradwell Village



David Evans
Bradwell Common



Rose Davy
Bradwell Common

Bradwell Parish Staff



Julie Godden
Parish Clerk



Teresa Wales
Assistant Clerk



Karen Evans
Assistant Clerk



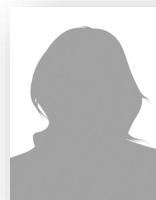
Peter Baldwin
Grounds Assistant



Peter Stamp
Grounds Person



Tony Hull
Weekend Caretaker



Audrey Grimm
Caretaker

Office Contact Details

21 Glovers Lane, Heelands, Milton Keynes, MK13 7LW

Tel: 01908 321285; Email: clerk@bradwell-pc.gov.uk; Website: www.bradwell-pc.gov.uk

Office Opening Hours

Daily: 9.30am - 4.00pm

Photographs courtesy of Rob Jones



Welcome to the Spring 2021 news-letter. I am finally retiring from the Parish Council at this year's elections after 37 years, acting as a

councillor, the chairman and its clerk at different times. Being a parish councillor is an interesting and rewarding way to serve the local community, which I would recommend to any community-minded person.

Throughout the COVID-19 pandemic, there have been many instances of Bradwell parishioners going beyond the normal call of duty to help both the local community, and individual residents. We sincerely thank everyone who has so generously given their time to help others. Hopefully, things will be much better in the future.

I have had several calls from residents questioning plans by Old Bradwell Football Club to erect stands, fencing and lighting around the football pitch in Abbey Road. As reported elsewhere in this edition, the Club has suspended discussion on these plans for this year, and guarantee to hold proper open public consultations next year.

We are hoping that new funding can be arranged to bring back the Abbey Field pond to its former glory.

We are delighted to welcome back Councillor Caroline Godfrey who has been co-opted to serve Bradwell Common on the Parish Council. Caroline, who was previously a member of the Parish Council, left to take up a senior position in Hampshire in 2015.

Councillor Harold Atkins

Bradwell Parish Council

Cordially invite our residents to the

Annual Electors' Meeting

Includes presentations to
Community Award &
Photographic Competition winners

Monday 19 April, 7.30pm
Venue TBC

A warm welcome awaits you!

**Come and meet your local
Parish Councillors!**



Councillor

Caroline Godfrey

Bradwell Parish Council are pleased to welcome Caroline Godfrey to the team.

Caroline Godfrey has recently returned as a Councillor for Bradwell Parish Council following the co-option process for parish councillors.

Caroline, who continues to work in Local Government, has lived in Bradwell Village for 39 years, and is very keen to support the Council and the Bradwell Parish community in local initiatives that improve the quality of life for residents and enrich our beautiful area.



New Homes for Heelands

Artist's impression of the proposed development at Glovers Lane



MK Council are planning to build six affordable dwellings on Glovers Lane. These will be two and three bedroomed homes.

Parish Council Meeting Dates

Monday 12 April	7.30pm
Monday 19 April (Annual Electors' Meeting)	7.30pm
Monday 17 May	7.30pm
Monday 14 June	7.30pm

Articles & Advertisements

Bradwell Parish Council welcomes articles and community information for inclusion within the newsletter. Please contact the Assistant Clerk: communications@bradwell-pc.gov.uk if you would like to discuss an article for future editions.

The Parish Council reserves the right to refuse any advertisement. The Parish Council does not endorse any services, products or political parties advertised in this newsletter and does not take any responsibility for the accuracy of articles provided to them from external sources. Deadlines and charges for advertising in the parish magazine are below:

Article and Advert deadline for the July issue: 21 April 2021

Quarter page (92mm x 65mm): Charities (local): free; Charities (other): £25; Commercial: £50

8th page (92mm x 65mm): Charities (local): free; Charities (other): £12.50; Commercial: £25

All articles and requests for advertising should be directed to the Assistant Clerk: communications@bradwell-pc.gov.uk

Parish News

Heelands Meeting Place

During the pandemic the hall received a make-over with a new lick of paint. It's looking so much brighter and fresher. Unfortunately we have made the decision not to let the hall out for parties until further notice. At the time of going to press the only group allowed to use the hall due to Government Guidelines is Twinkle Tots Pre-school.



Updates

Old Bradwell Football Club Proposed Expansion

Bradwell Village residents will be aware that the Bradwell Sports & Social Club sent round a leaflet proposing to expand the football club and erect lighting etc. The proposed plan has been postponed until next year when the club will be canvassing local residents more widely and asking for feedback.

New Hall at Suffolk Punch site

Many residents will be aware that the parish are building a new community hall on the site of the old Suffolk Punch Public house in Heelands. By the time you read this article we will hopefully have gained planning permission to build it. The hall will offer community space and will also house the parish office.

Hall Name

At the moment the hall doesn't have a name. Do you have an idea for a name, bearing in mind the area, the site and its heritage. Heelands street names are named after the north-west Yorkshire highlands.



Please send your ideas to communications@bradwell-pc.gov.uk by 30 April.

New Homes for Bradwell Common

Grand Union Housing Group's development in Bradwell Common will provide 34 much needed new homes in Milton Keynes.

The site at Hampstead Gate, which was acquired from Milton Keynes Development Partnership (MKDP), was first earmarked for development several years ago in the council's Local Plan. The mixed tenure development will consist of 14 one bed apartments, 12 two bed houses and eight three bed houses for rent and shared ownership.

Dave Lakin, Director of Development & Commercial at Grand Union, said: 'We are pleased to have this opportunity to deliver much needed housing in Milton Keynes. Over the last decade the city has seen a rise in homelessness, an increase in the use of temporary accommodation and higher than average housing costs, so affordable housing is very much needed.'

We are grateful to the local community and key partners who are working with us to transfer an unused site, allocated in the local plan, into high quality modern homes.'



Competition Winners

John Newbury Photographic Competition 2021

Bradwell Parish Council are pleased to announce that the winner this year is Susan Burgess with her photo of the tunnel under the railway connecting Bradwell Village to Bradwell Abbey, taken from Bradwell Village side.

Community Award 2021

Bradwell Parish Council are pleased to announce that the winners for this award has been jointly awarded to Tony Barron and Dianne Sutton for the voluntary work they do within our community.

From the Community



Cook Club Book Club

Residents local to the City Discovery Centre where arts organisation, Inter-Action MK, are based, are currently taking part in a lovely project based around cooking, reading, and sharing food stories.

Adults who have been isolated throughout the past year, and whose mental well-being has taken a dip have been sharing their recipes and food stories and

taking part in special cooking events hosted by guest food professionals.



The project has mostly been running remotely for obvious reasons, but we are hoping to begin the next phase where we can offer opportunities for small groups to come and work with us in our lovely gardens.

If you would like to get involved in the next stage of Cook Club Book Club, or know someone else who might, then do get in touch. For more information, please contact Jesita Patel.

Email: Manager@interactionmk.org.uk
Phone No: 01908 318285

Robins Children's Centre

Although our doors are currently closed, we are still supporting families in our local area by telephone and messaging families daily to offer one to one support



on a variety of issues including financial, improving mental health and well-being,

parenting, home schooling and sign-posting to other agencies.

Children's centres are working alongside local agencies to provide support for families in need such as Food Bank parcels and Baby Basics hampers as well as advice on training and courses. We are also offering online parenting groups and new parent groups.



During lockdown our weekly activity packs provide a fun learning resource.

The Robins Children's Facebook page has lots of information. If you live in Milton Keynes and have a child under 5, you can register online, using the Children's Centre Registration Form. Please contact us on 01908 217135.

Carers MK Writing Group

Carers MK exists entirely to support the health and wellbeing of individuals who are caring for someone who cannot manage without them due to illness, physical disability, frailty, learning disability, mental health issues, addiction or additional needs. (You need not qualify for Carer's Allowance.)

They provide a variety of free support services including information and advice on carers' issues and rights, counselling, support groups, events, carers activities, and much more.



One regular activity is a free monthly Writing Group meeting, currently via Zoom, on the second Wednesday of every month from 10.30-12.00. Writing

is a fun way to be creative, and a great escape from everyday stresses, and we welcome all levels of experience. So, whether you've only written To Do lists since school or you're on your nineteenth novel, if you enjoy wrangling with words and want to meet some like-minded people, contact Carers MK on 01908 231703 or mail@carersmiltonkeynes.org

CarersMK

Bradwell Charities

The 'Thanks'

We are grateful to the elderly residents who have contacted the Parish Council to say thank you for their Christmas gift. However, these thanks should not be addressed to the Parish Council which is definitely not giving away Council tax payers' money like this. These gifts are made by The Bradwell Relief-in-Need Charity, which makes Christmas awards to parishioners who are over 70 and in need. They are financed by charitable trusts, most of whose income originated in the 18th Century.



gentlespaces

for those who are grieving



Have you recently lost a friend or family member? Would you find it helpful to meet with others who are also dealing with loss?

gentlespaces are safe places for those who are grieving.

If you would like to join one of our supported Zoom groups, please contact 01908 382318 (10-12am and 6-8pm Mon, Weds, Fri) to book your place

A project by MK Mission Partnership with funding provided by MK Community Foundation

News from Bradwell Church

The last year has been quite a change for us at Bradwell Church. The small size of the building and social distancing requirements have made it impractical to hold services in the building, but we have not been idle! The church roof replacement is now finished. Thank you so much to all those who have worked hard to make it happen and everyone



who donated to the appeal.

There is a video service each week posted on our website, which is also distributed on paper to those who don't have a computer. We are also holding services on Zoom

each Sunday, so we can still speak to each other. This has allowed new people to join us too. Our Coffee Morning has also moved online, to Wednesday afternoons. All these activities will continue online even when we move back to more normal times.

Do check out the website for Easter details.

Rev Neil Popham

Summerfield School

At Summerfield School we pride ourselves on helping the local community. We therefore decided to do a Charity Gift appeal in December for three MK charities.



This has been an incredibly hard year for so many people and despite us all having been affected in some way, we wanted to help those hit hardest. We set about contacting the three charities; Baby Basics, MK-Act and Conniburrow Children's Centre and were delighted that we could help. We had over 110 labels for families and individuals who we could buy gifts for. The generosity from both parents and staff was overwhelming. We managed to donate over 80 gift bags to the three charities with



gifts and other items. Some gift bags were filled to the top! Wednesday 9 December was collection/delivery day! Baby Basics came to collect from our School whilst we delivered to MK-Act and Conniburrow Children's Centre. We felt like Father Christmas!

'We decided as everything was so different this year that we wanted to abandon the normal secret Santa and to reach out to people in need in our community. We chose the three charities as they had all been used during the pandemic by families in our school and we knew what a hugely important role they play supporting those in fear or need. Staff and parents really participated and some even bought gifts for several families', Ian Fraser, Headteacher

This was such a great success that we would like to help some other charities or local causes. Please do get in touch if you think we can help you at office@summerfieldschool.org. Together we are stronger.

Bradwell Bowls Club

NEWS FROM THE BOWLS CLUB...

... Not a lot! But rest assured, we are still here!



After turning what could have been a disastrous last season we turned it into quite a success, albeit with much help from our members and Bowls England. We find ourselves faced with the same uncertainty again this year. But, we must plan

for normality of some sorts, and even if we are under the same constraints we will do our utmost to stage bowling in some form.

A reminder that we are always on the lookout for new members and if you see activity of any kind on the green, do call in and find out what we can offer you.

MK Museum spends lockdown nurturing nature

Milton Keynes Museum is currently closed to the general public, but it has been receiving many visitors of the bird and animal variety!

The museum has taken the opportunities afforded by lockdown to focus on its outside spaces, paying particular attention to the nature trail, and insect houses which have been expanded to encourage more six-legged visitors. Bird feeders have been placed around, and a new, safe dipping pool is set to become a feature.

The site improvements have been a valuable exercise for those volunteers who felt able to work outside too. More areas have been planted with wild flowers and the museum expects to have a blooming lovely summer! The land is also home to voles and hedgehogs, and receives visiting foxes. 'Milton Keynes has always had a good supply of wildlife and we remain keen to promote that to visitors and to encourage more species to our garden and green spaces,' said Museum director Bill Griffiths.

For up to date information and bite-sized history moments, find the museum on Facebook and Twitter @MKMuseum



Little Robins Childcare

Following government guidelines and restrictions, Little Robins Childcare has had to adapt to find its 'new normal', however it has not dampened our positive spirits!

All of our children have been amazing during this lockdown and it certainly hasn't stopped play. Currently, we are only open for vulnerable and keyworkers' children during the morning sessions, allowing our local keyworker community to continue with their daily routine.



The Little Robins children have been partaking in foreign country themed breakfast sessions and have had great fun eating French toast and decorating



American pancakes to brush off any nerves before heading off into school.

We look forward to welcoming all

of our children back as soon as we can, but until then – stay home and stay safe!

Love the Little Robins Team

07702864725

little.robins@yahoo.com

Tread the Boards

Acting in Lockdown!

The challenge of constant lockdown for local amateur theatre groups has led to some innovative ideas to entertain people in MK.



The members of Tread the Boards Theatre Group have had to take all their activities on-line and learn more about film-making in order to share their output for 2021.

The group now rehearses over a cloud based portal on Monday evenings – and working in collaboration with other theatre companies now has at least 40 actors, some residing in Bradwell Parish, regularly participating.

Chairman Mike Ames said: 'The current way of working has provoked interest from those who may have been keen to join a drama group but were not sure if it would be too great a commitment. This way people have been able to join an on-line meeting and observe or take a more active part and then see if it suits them.'

Anyone over 16 interested in drama who wishes to join in is welcome to find out more at www.tread-the-boards.org.uk.

The group hope to stream the projects they have been working on over the Spring and Summer.

an agricultural labourer, and his wife Jane.

A few weeks earlier the 1891 Census had been taken and William and Jane were living in Loughton Road. Jane had previously been married to Thomas Malley and their children, Flora, who at 14 was already employed in domestic service, Maud 12 and Charles 10 lived with William and Jane and their children Edith 7, Nora 5, Mary Ann 4 and baby Harry.

In 1894 the registers for the Old Bradwell Board School tell us that Harry was admitted to the Infants school. His younger brother, William joined him there in 1896.

By 1901 the family had moved to Elm Cottages, Old Bradwell and dad William was now employed as a moulder's labourer probably in the railway works at Wolverton. Edith and Nora are still living at home but are both now employed at McCorquodale's printing works in Wolverton, like many other local girls. Harry, 10, has been joined by his younger brother William who is 8, at Old Bradwell Board School.

By 1911 the family had moved again, this time living in Bury Lane, Bradwell. William is now employed as a furnace labourer at the railway works and sons Harry and William also work in the Works, Harry as a carriage fitter and William as a carriage body-maker.

The only WW1 death for a William Lennard has service number 98328. He died on April 11 1918 aged 23 and is commemorated on the Ploegsteert Memorial to the Missing, in Belgium, a Sapper in the Royal Engineers. 'Soldiers Died in the Great War' show his service number as 98328 and that he left a wife Harriet.

Sometime between 1911 and going to war William must have stopped being employed at the Works in Wolverton as he does not appear on the new memorial to the men of the Works who died in the 1914–18 war, which is in front of the Town Council offices in Wolverton and was unveiled in 2019.

Harry Leonard and his wife Sophia named their son William, born in 1925, after Harry's brother. Harry died in 1962.

Harry must have been very close to his brother William to go to the expense of funding a personal memorial stone on the wall of the Memorial Hall and it's nice to still be able to see it there today.

Dianne Sutton

A Snippet of History

The Memorial Hall Plaque

The foundation stone for the memorial hall was laid on 29 September 1923 and was dedicated on 12 January 1924 to stand as a commemoration of those who gave their lives as well as those who served in WWI. Later names from WWII were added to the roll at the entrance.

Along the side of the building are some plaques. One of them reads 'Laid by H Lennard to the memory of his brother William'.

Harry Lennard was born in Bradwell in January 1891 and baptised at St Lawrence on 3 May 1891 the son of William Lennard,



Local information

When we had a snowy day, the waste collections were put back a day and it was interesting to see that there were still a lot of bags put out for collection despite this change.

The recent changes to our waste collections, whether it be to cancel the green bin collections or a change to the collection day have been reported on our parish Facebook page and all the local Facebook groups as well. You don't need to have an account to view the parish Facebook page but you will need to be a member to read the posts and see what's going on some of the group pages.

Our local areas all have their own Facebook pages and these are good places to look for local information – there is one for Bradwell Common, three for Heelands and two for Bradwell Village.

Links to local websites and Facebook pages:
Bradwell Parish Council Website & Facebook page
www.bradwell-pc.gov.uk
facebook.com/bradwellpc

MK Council Website & Facebook
www.milton-keynes.gov.uk
facebook.com/MKCouncil1

MK Connect – New 'Bus' Service

MK Connect is a new demand-responsive transport service powered by ViaVan and covering the area previously served by bus route 28. It is being rolled out to some other routes at the beginning of April 2021.

MK Connect is a ridesharing service that meets you wherever you are. When you're ready to go, book your journey via the MK Connect mobile app or over the phone. You'll be matched with other passengers heading in the same direction. The 'bus' is booked at the time of travel and not in advance. All single trips cost £2.50 and are free for Older Person's and Disabled Person's bus pass holders.

Please note: Although journeys may be shared, the maximum number of riders per vehicle has been limited in compliance with social distancing guidelines.

Currently MK Connect covers the area previously served by bus route 28 and offers connectivity across Bletchley, Furzton, Tattenhoe, Emerson Valley, Shenley Brook End, Medbourne, Loughton, Grange Farm, and Central Milton Keynes. It operates Monday-Saturday 7am-7pm, Sunday 11am-4pm.

From March 31, 2021, many of the supported bus services in Milton Keynes will come to an end and MK Connect will replace the following routes those **301, 23, 30/31, 37, 9, 17, 18, 24/25, 28** and **80**. The following routes may be subject to route and time-table changes **11/12, 14, 8, 300, 1, 2** and **7**.

For more information please visit MK Council www.milton-keynes.gov.uk/highways-and-transport-140hub/bus-and-taxi/demand-responsive-transport-drt and Get Smarter Travel MK www.getsmartertravelmk.org/



KEYLESS THEFT OF CARS

There has recently been an increase in the theft of keyless cars in MK.

Here are some tips to help prevent this happening:

WHAT IS KEYLESS THEFT OF CARS?

This is the process criminals use to steal a car without the keys using a relay amplifier and transmitter.

One accomplice stands by the car with a transmitter, while a second waves the amplifier around the perimeter of the house. If the car key is close enough the amplifier will detect its signal, amplify it and send it to the accomplices' transmitter, which effectively becomes the key, and tricks the car into thinking that the real key is nearby. This whole process can take as little as 60 seconds and can be completed in silence.

HOW TO AVOID KEYLESS THEFTS

- Keep the key fob away from doors and windows.
- Use a security device such as a steering wheel lock, a driveway parking post or a wheel clamp.
- Consider a Faraday Pouch to keep the key in.
- Have a tracking device fitted to your car.

C7039 PCSO Lesley Rogers
TVP Milton Keynes