

Bradwell Parish News

Issue: Spring 2020

VE 75th ANNIVERSARY FUN DAY

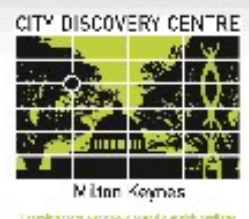
Sunday 10th May 2020
2pm-4pm

At City Discovery Centre, Bradwell Abbey

Learn what the life of an evacuee was like
Enjoy lots of fun and games • Bouncy Castle
Café with homemade cakes • Kiddy Crafts
Live music from Trilogy • Meet our very own Land Girl
FREE event open to the public

Jointly funded by Bradwell Parish Council and MKCDC

Milton Keynes City Discovery Centre
Alston Drive, Bradwell Abbey, MK13 9AP
01908 227229 information@mkcdc.org.uk



Discover more about our special heritage

Parish magazine covering

Heelands Bradwell Village Bradwell Common Bradwell Abbey Rooksley

Bradwell Parish Councillors



Leon Gilpin
Heelands
Chairman



Marie Bradburn
Heelands



Harold Atkins
Heelands



Jenny Jones
Heelands



John Holley
Bradwell Common



James Alexander
Bradwell Village
Vice Chairman



Robin Bradburn
Bradwell Village



Rex Exon
Bradwell Village



David Evans
Bradwell Common



Rose Davy
Bradwell Common

Bradwell Parish Staff



Julie Godden
Parish Clerk



Teresa Wales
Assistant Clerk



Karen Evans
Assistant Clerk



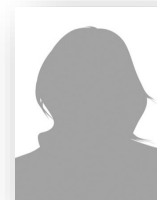
Peter Baldwin
Grounds Assistant



Peter Stamp
Grounds Person



Tony Hull
Weekend Caretaker



Audrey Grimm
Caretaker

Office Contact Details

21 Glovers Lane, Heelands, Milton Keynes, MK13 7LW

Tel: 01908 321285; Email: clerk@bradwell-pc.gov.uk; Website: www.bradwell-pc.gov.uk

Office Opening Hours

Daily: 9.30am - 4.00pm

Photographs courtesy of Rob Jones



I moved to Milton Keynes in 1986 and started working for Cable & Wireless. I also became a Special Constable, which I did for four years, sometimes wishing that I had discovered it when

I was much younger. The uniforms the specials have to wear now is quite frightening, they need so much protection and lots of our support, as do all of our police officers. We moved to Heelands in 1999. I retired in 2004 and have always kept busy, volunteering for Homestart, from where I have made some really good friends. After that I supported an elderly gentleman and then became a Parish Councillor. Twenty years later my husband and I have now downsized to a bungalow on Bradwell Common. As Bradwell Common is still within the Parish I am able to remain a Parish Councillor. I am enjoying my role as a Parish Councillor and have learnt a lot about what a Parish Council does. We as a council have a monthly meeting on the first Monday of each month, (except for bank holidays). Everyone is welcome to attend whether it is to find out about our Parish, to just listen or ask questions regarding a problem. I hope it has been noticed that the children's playgrounds are being improved and we are mindful of the need for more trees in the parish. Hopefully, I can continue as a councillor for a few more years and make a small difference.

The sun is shining and Spring is here, lots more to do outside, I am looking forward to discovering what I have growing in my new garden and I am sure many people will be out in theirs.

Councillor Jenny Jones

In the Spotlight

Tony Hull: Caretaker

Tony has been the weekend caretaker at Heelands Meeting Place for the past three years. He opens and closes the hall for all the events that take place at the weekend and ensures that the hall is ready for the next event to take place. If you've used the hall for a party you will have been greeted by his smiling face on arrival. Tony says, 'he tries to be a friendly face for Bradwell Parish Council'.

Apart from opening and closing Heelands Meeting Place Tony performs a variety of odd jobs for the Parish Council, mainly at the Parish Office, anything from laying carpets to putting up blinds.

Tony's main job is as a Caretaker for Heelands School.

Tony enjoys meeting lots of different people from all walks of life. He loves the variety of tasks that a caretaker is called upon to do, especially DIY and fixing things.

In his spare time Tony is a PC Gamer, playing survival and sandbox type games. He also enjoys quad skating and has recently taken up archery.



John Newbury *Photography*



Competition 2020

£50 prize!

Closing date for entries: **6 April**

Send entries to
communications@bradwell-pc.gov.uk

Entry requirements

Open to all Bradwell Parish residents
Must be an amateur photographer
All photos to be of Bradwell Parish with a caption giving the location
All photos to have been taken from April 2019 onwards

Bradwell Parish Council

Cordially invite our residents to the

Annual Electors' Meeting

Includes presentations to
Community Award & Photographic
Competition winners

Monday 20 April, 7.30pm
Heelands Meeting Place

Refreshments included

A warm welcome awaits you!

**Come and meet your local
Parish Councillors!**

Parish Council Meeting Dates

Monday 6 April 2020	7.30pm
Monday 20 April 2020 (Annual Electors' Meeting)	7.30pm
Monday 18 May	7.30pm
Monday 1 June	7.30pm

Articles & Advertisements

Bradwell Parish Council welcomes articles and community information for inclusion within the newsletter. Please contact the Assistant Clerk: communications@bradwell-pc.gov.uk if you would like to discuss an article for future editions.

The Parish Council reserves the right to refuse any advertisement. The Parish Council does not endorse any services, products or political parties advertised in this newsletter and does not take any responsibility for the accuracy of articles provided to them from external sources. Deadlines and charges for advertising in the parish magazine are below:

Article and Advert deadline for July issue: 20 April 2020

Quarter page (92mm x 65mm): Charities (local): free; Charities (other): £25; Commercial: £50

8th page (92mm x 65mm): Charities (local): free; Charities (other): £12.50; Commercial: £25

All articles and requests for advertising should be directed to the Assistant Clerk: communications@bradwell-pc.gov.uk

Heelands Meeting Place

Did you know you can hire the hall? We currently have the following time slot available for hire from Monday to Friday between 5.00pm – 6.30pm.

There are several groups that meet on a regular basis at the hall. The hall is available for children's and adults' parties at the weekend. Prices start from £15 per hour.

Tel: 01908 321285; Email: admin@bradwell-pc.org.uk



What's On

5th April: Easter Egg Trail, Bradwell Abbey

6 April, 7.30pm: Council Meeting, Heelands Meeting Place

20 April, 7.30pm: Annual Electors' Meeting, Heelands Meeting Place

20 April: Newsletter article and advert deadline

1st May: May Day Chapel Re-opening, Bradwell Abbey

3 May, 10am - 4pm: Bradwell Bowls Club open day

8 May, 12pm-5pm: Street party, Bradwell Memorial Hall, Bradwell Village

10 May, 12pm-4pm: VE 75th Anniversary Street Party, Bradwell Abbey

18 May, 7.30pm: Council Meeting, Heelands Meeting Place

31 May: Wildlife Festival, Bradwell Abbey

1 June 7.30pm: Council Meeting, Heelands Meeting Place

If you have anything that you would like to put in our **What's On** section please do let me know.

Email: communications@bradwell-pc.gov.uk

Sports Round-Up

Reports from local sports clubs

Old Bradwell United Football Club

We have had an absolutely amazing 2019, where our 25 year wait for a trophy ended with us securing two cups! So as we move in to 2020, the club is positioned well to hopefully bring further successes.



Although our success has been recent, it has been bred over many years with a core of local players who grew up around the village and have been at the club since they were teenagers. We run two teams, with the development team made up of mainly under 20's.

Manager, David Keene, has been at the helm for the last seven years and 2019 ended with us still in three cups (two quarter finals and a semi final) and top of the Division.

This season we have seen more local



supporters come and watch for the first time, which has been amazing for our players and committee. So, if you are ever free on a Saturday afternoon, pop down and hopefully we can provide some entertainment.

For our fixtures list please go to www.oldbradwellunited.com or come and visit the club.

Bradwell Bowls Club

The Season Ahead

Bradwell enter the 2020 season with new shirts and a new club badge.

We are looking to increase our numbers and start with an Open Day on Sunday 3 May from 10am to 4pm. Just come along with flat-soled shoes, we will supply the rest.



Did you Know?

The first vicar at St Lawrence Church was Henricus, he was vicar in 1223 and there have been 57 vicars since then.

The St Lawrence Church boasts some of the oldest bells in the country dating back to 1310.

This season we have implemented a new coaching structure which will focus on one to one tuition where needed. Our five coaches are friendly and approachable and their advice is free.



The season starts at the end of April, so feel free to drop in whenever we are there. As usual, our season comprises of league and cup competitions, plus friendlies and internal competitions, so there's something for everyone whatever your expertise.

Bowls is a social sport for all ages and Bradwell is your friendly, local club. Why not call in and see what we have to offer?

Community Partnerships

VE Day Celebrations: Bradwell Abbey & Bradwell Memorial Hall

Why not come and join in the VE Day celebrations.

Bradwell Abbey are holding an afternoon for invited guests only followed by a fun afternoon for all on Sunday 10 May. The 'fun element will include games for all the family, a bouncy castle and musical entertainment provided by Trilogy, a ladies acapella group, singing music from the 1940s. We are encouraging people to dress up in 1940s style dress.

Bradwell Memorial Hall are holding a street party on Friday 8 May, from 12 noon till 5pm. There will be a magician and a DJ. Please bring a picnic. Ice cream and refreshments will be on sale. Please do come and enjoy yourselves!

Why not come along and join in the fun in one or both of these events.



8-10 MAY 2020

Play Areas

Two play areas on Heelands have recently been extended with extra play equipment and an outdoor gym. Both of these areas were created in joint partnership between Bradwell Parish Council and Milton Keynes Council.

You will find extra play equipment at the play area next to the shops on Heelands. It looks great fun and the children all seem to be enjoying it!



An outside gym has been installed at the play area where the five Redways cross. This is aimed at adults and over 14s. We have received some positive feedback via Facebook.



We are exploring other areas to expand or enhance. If you have any ideas please do let us know.



Bradwell Parish Community Award

Do you know someone that has gone the extra mile in the Parish? Why not nominate them for this award?

Closing date: 6 April

£50 prize

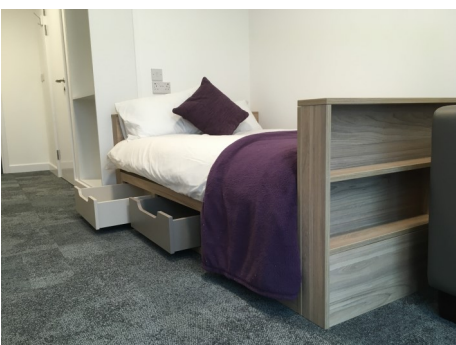
Parish Grants

Did you know that local groups can apply for a grant from their Parish Council?

YMCA Update

Bradwell Parish Council awarded a grant to Milton Keynes YMCA towards furnishing a bedroom in their new, bespoke building. The exciting new campus in Central Milton Keynes should be open by the time you receive this newsletter.

The new campus has 199 rooms, 53 more than previously. The YMCA provides accommodation and support to young people aged 18-35 who are either already homeless or at risk of homelessness.



Each resident will stay for an average of three years, during which they will follow a pathway of support, leaving as a confident, independent young adult with a home, a job and the skills to sustain both.

The new building includes social enterprises including an exciting independent café, HomeGround, and a five room conference centre.

The campus also offers affordable accommodation types: a studio and one-bedroom flats which are available for rent. Anyone interested should contact Elevation Lettings at <https://www.onthemarket.com/details/8304690/>.

Did you Know?

Heelands was the location of a Roman farmstead, a Neolithic settlement and in Medieval times was worked using the ridge and furrow system.

Macmillan Coffee Morning

At the end of September the Parish Office held a Macmillan Coffee Morning. We had a great time meeting everyone and we even had a visit from Poonam Deol who works for Macmillan. We managed to raise £150. We had a huge spread of cakes and other goodies. Thank you to Bradwell Parish Council for their support.



Please keep an eye out for our next fundraising event!

Ironing Service

**Free Local
Collections
&
Deliveries
Available**

Making Your Life Easier



Easter Fun and Egg Hunt

Friday 10th April to Monday 13th April 2020

The hunt will be on at Milton Keynes
Museum this Easter

Open 11am - 4:30pm
Adults £10.00, Children £7.00, Conc. £8.00,
Families £30.00
Tickets give free re-admission for 12 months

For more info about this and other upcoming events
please visit mkmuseum.org.uk



BRADWELL BOWLS CLUB

Tempted to try bowls? Then
join us for our **2020 OPEN DAY** on
Sunday May 3rd from 10am and see
what bowls can offer you. Just wear
flat soled shoes/trainers and we will
supply the rest.

BRADWELL BOWLS CLUB is a warm and friendly
club that welcomes all ages, whatever your
expertise.

Come along, talk to our coaches, watch or take
part – it's a fun day!

BRADWELL BOWLS CLUB Primrose Road Bradwell Village



SCHOOL FIELD FOR HIRE



**Do you run a Sports club,
Activity Fitness group or Bootcamp?**

**Looking for a huge open space
with onsite facilities?**

Looking for competitive prices?

You can hire our School Field!

Please do get in touch.



The Best You Can Be; Everyone, Every Day



Summerfield School

Downley Avenue, Bradwell Common, Milton Keynes, MK13 8PG

Telephone: 01908 662 585

Email: office@summerfieldschool.org

Cotswold Lavender Farm Coach Trip Wednesday 1 July

Parish Resident £5.00
non-Parish Resident £7.50
Tickets available at the Parish Office
from 6 May
Wednesday's **ONLY** 9.30am-4.30pm



From the Community

Get to know your local PCSO - Gina Barry



Hello, I am one of your new local Police Community Support Officers. I work in the communities of Bradville, Stantonbury, Bradwell and Heelands. I have been a PCSO for three years and worked in the Great Linford Parish before being transferred to my current area.

I enjoy the job very much, dealing with community issues as well as attending events, schools, meeting the local community and getting to know you all. We aim to be seen in the areas where you live and patrol on a regular basis by foot, car and bike.

If you see me out and about, please come and have a chat.

Gina Barry

Bradwell Sports and Social Club

The Sports and Social Club is a members' only club, open to all in the Parish and run by volunteers for the benefit of the members.



The Club offers residents the opportunity to participate in team games such as Cricket, Football, Darts, Dominoes and Cribbage plus various other entertainment evenings throughout the year. The bar is open for social activities every evening from 7:30pm and all day on Saturday's and Sunday's from 12 noon, hosting all events live on Sky and BT Sports.

The Club is always looking for new members. If you are new to the area or didn't know the club existed, why not come down and enjoy a drink and meet the members. We look forward to meeting you all.

Sports Pavilion, Abbey Road, Bradwell, MK13 9AR
email: Bradwell.ssc@gmail.com

Bradwell Parish Council – Trip to Winchester

It felt like an early start as the enthusiastic group gathered outside Bellfounder House to await the arrival of our tour bus. Rain threatened, but no rain came. Despite some road delays, we arrived in Winchester at a good time, and found the city bedecked in festive finery. A narrow alleyway led to the cathedral green where, at first sight, there appeared to be a few chalet-style cabins selling a variety of seasonal goods. On closer inspection, another alley passed through the cathedral's flying buttresses into a further large area filled with yet more stalls, and an ice-rink in a large marquee, where you could take your first tentative steps with mock penguins, or dazzle everyone with 'Torvill and Dean' like

Join The Great British Spring Clean

Be part of the pick

Would you like to help Bradwell Parish Council with The Great British Spring Clean?

Saturday 4 April, 10.00 – 12.00

Meet at Heelands Shops Car Park

To take part please email the Parish Office

communications@bradwell-pc.gov.uk

Protective gloves, Hi-Vis jackets and litter picking paraphernalia provided



performances. There was a huge variety of goods on sale; from knitted, woven and crafted textiles; handicrafts, and every manner of Christmas-themed gifts and souvenirs. There was food, too, both to enjoy on-site and to take away. Roasted chestnuts and mulled wine along with French crêpes, sold by a pair of delightful French ladies. And, of course, the cathedral was at the heart of it all – and apparently hosting much of it. There was time to explore the cathedral, with its vast history, architecture and nobility. It would have been easy to stay there for all of our time in the city, or traipse around the city itself, with buildings over a millennium old and countless fascinating nooks and corners. But we had a splendid day, with plenty of opportunities for shopping, exploring, and indulging in history and architecture. And there were ample restaurants and cafés to sustain us. There's obviously plenty to lure us there again, and I have a feeling we may have to do it again in future years. We were very impressed with our tour-bus provider (Bill's Coaches, and driver Andy), and would confidently use them again. Meanwhile, we would welcome suggestions for other tours we might arrange in the future.

John Holley



Bradwell Common Community Centre

The Community Centre is located in the heart of Bradwell Common and offers a great location for community events and activities. There are several groups that regularly use the hall including Pre-school, Free Steppin dance classes and MK Jiu Jitsu.

For further enquiries please contact
Centre Manager: Jim Davison
Mobile: 07812593619
Email: sharn_jim_jacob@hotmail.com



Reflections of a newcomer to Bradwell

Rev Neil Popham of St Lawrence Church

Happy 2020!

It's a year since we moved to Bradwell. Sometimes it still feels very new, other times it's like we've been here for ages. We're so grateful to you all for your welcome to us. It's a great place to be and all our visitors have been amazed, and said how different it is from the

caricature of concrete and roundabouts (though there are still lots of roundabouts!).

As well as the great church community, it was lovely to share Christmas with all the different folk I met at services or carol singing, I've really enjoyed my involvement with the local schools, and also meeting folk at the many different parks. Our children love them, and the sessions organised by the MK Play Association in various places over the Summer were awesome.

This year I'm looking to carry on building church and community in Bradwell, Heelands and Bradwell Common, and in the Stantonbury Partnership right across the north of Milton Keynes. We'd love you to join in too.

Best wishes,

Neil



A review of 2019

Christmas lunch is a special social occasion and we had a fabulous time at The Red House in Newport Pagnell. We returned there in January for a fish and chip lunch before our meeting which included a quiz to get the brain cells working again after all that feasting!

We have since enjoyed a varied programme of speakers which included Ken and June Brazier telling us all about 'Mercy Ships' and Jonathan Fryer 'The humorous side of being an Actor' – what a gent and so entertaining.

Fifteen of us went on the annual outing to Jordan's Mill. The day was enjoyed by all and the Mill staff looked after us with great care. The lunch was delicious and even the weather was perfect.

This year we are to be entertained by Mark Niel, Milton Keynes' Poet Laureate in February and by Cecile Whidborne in March with a talk entitled 'Lost in Translation'.

2020 is our 75th year and we are planning an afternoon tea in the Summer to celebrate.

Do feel free to join us if you can. New visitors are warmly welcomed and if you would like to join our merry band the fee for 2020 is £43.00, pro rata.



Bradwell Women's Institute News

We meet at the Bradwell Sports and Social Club on the third Tuesday of every month starting at 2:00pm. We have changed our meeting format and now enjoy our speaker first and finish with official business over tea and cake. Attendance throughout the year at meetings has been very high and our monthly meetings have been most relaxed and enjoyable.



Join the dots and then colour it in to complete the picture.

Jokes

What season is it best to go on a trampoline?

Spring time

What do you call a rabbit with fleas?

Bugs Bunny

