








**Notes**

1. This drawing is to be read in conjunction with all the relevant contract documentation.
2. All dimensions are in mm unless otherwise stated. Dimensions to be checked on site prior to construction and any discrepancies reported to the Roton Group Engineer.
3. Only drawings that indicate CONSTRUCTION as the issue purpose should be used for construction.
4. Any CONSTRUCTION status issue does not provide or imply approval or validation of any third party information.
5. Revision clouds are shown for assistance only, the whole drawing is to be checked for new/ amended information.
6. Not all hatches and linetypes shown on legends and keys may be present on this drawing. Drawings to be printed in colour by default, typical material colours are for clarity only.
7. Refer to masonry details drawing 200427-RGL-ZZ-ZZ-DR-S-740-0001 for masonry notes.

**Steelwork Notes:**

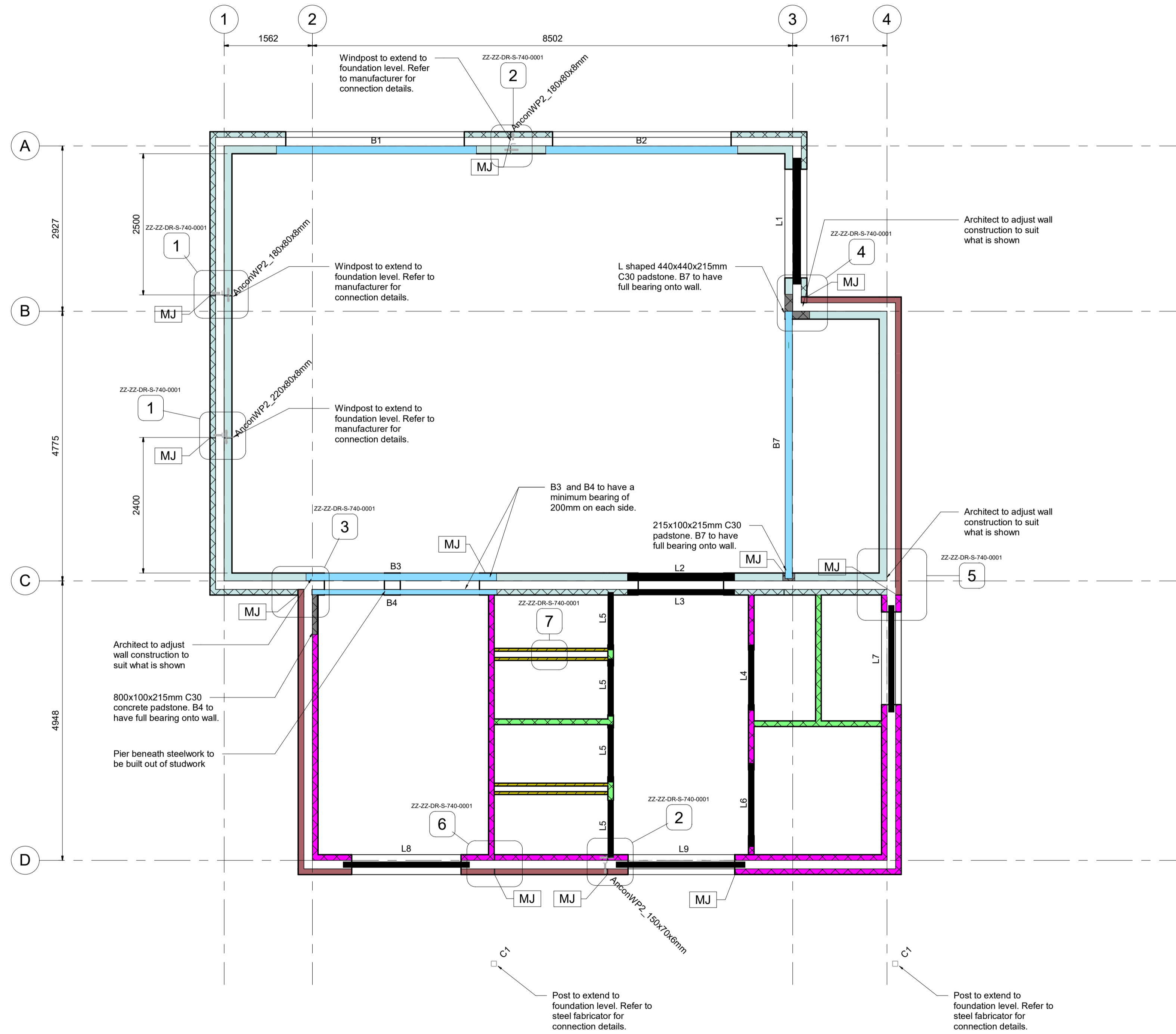
1. All steelwork requires min 60min fire protection unless it is only supporting the roof structure. Fire Protection details to be specified by others.
2. Steelwork below ground or permanently encapsulated within cavity to receive 2 coats RW over primer (or similar approved).
3. All fabrication drawings to be issued to Roton Group for comment min. 7 days prior to fabrication.
4. All welding to be in accordance with BS EN 1011 butt welds to be tested to BS EN ISO 17640:2010. Fillet welds to be inspected to BS EN 1090:2008
5. All steelwork connections to be designed and detailed by fabricator & submitted to the engineer for approval.
6. All steelwork to be Grade S355 SR to BS EN 10025-2 unless noted otherwise.
7. All steelwork to be CE marked to BS EN 1090-1 and 1090-2
8. All steelwork to be fabricated to Execution Class EXC2 to BS EN 1090-2
9. All fabrication and erection of steelwork to be in accordance with the National Structural Steelwork Specification 7th Edition CE Marking Version.
10. All internal steelwork to be painted to meet Environmental Category C2 to BS EN ISO 12944 top coat colour to be determined by Architect
11. All steelwork dimensions and heights to be measured and verified on site by the contractor prior to fabrication.
12. Galvanised steelwork TO BE GRIT BLASTED, FLASH PICKLED AND HOT DIP GALVANIZED (140µm/1000g/m²).
13. Lintels to be installed in accordance with the manufacturers details

**KEY**

-  Denotes 140mm thick 7.3N/mm² blockwork (Cavity and wall build up to architect's details)
-  Denotes 100mm thick 7.3N/mm² blockwork (Cavity and wall build up to architect's details)
-  Denotes 100mm thick 3.6N/mm² blockwork (Wall build up to architect's details)
-  Denotes 100mm thick 3.6N/mm² blockwork to be built off beam and block floor (Wall build up to architect's details)
-  Denotes 102mm thick 20N/mm² facing brickwork (Cavity and wall build up to architect's details)
-  Denotes timber buttress wall (Wall build up to architect's details)
-  Denotes movement joint location
- B1 & B2** Galvanised 140x140x8 SHS with 8mm thick boot plate welded 6FW 100HIT 200MISS. Grade S355. Both sides of beams are to have a minimum bearing of 150mm onto masonry.
- B3** 203x133x30 UB Grade S275
- B4** 180x90x26 PFC Grade S275
- B7** 305x127x42 UB. Grade S355
- C1** Galvanised 100x100x6.3 SHS with 6mm thick baseplate. Grade S355
- L1** L1/HD 150 WIL IG lintel or equivalent
- L2** Box 140 IG lintel or equivalent
- L3** Box 100 IG lintel or equivalent
- L4, L5 & L6** Box 100 IG lintel or equivalent
- L7** L1/HD 150 IG lintel or equivalent
- L8 & L9** L1/XHD 150 IG lintel or equivalent

Refer to lintel manufacturer for installation and minimum bearing requirements

**Wall cladding to Architect's/Specialist's details**



**DO NOT SCALE** Copyright Roton Group Ltd 2021  
This drawing shall remain the copyright of Roton Group Ltd.

Standard construction hazards that a competent contractor would be aware of have not been identified on this drawing. Risks that may not be immediately apparent are listed below.

East Anglia Water deep drainage run

Status	Date	Description	Dim	Eng	Chkd	Ver
D2-P01	19.03.21	Issued for tender		JSM	GUS	AJB
D2-P02	15.08.22	Drawing updated to reflect latest Architect model		AJ	GUS	AJB



**ROTON GROUP**  
ENGINEERING THE FUTURE™  
www.rotongroup.com 01933 410909

Project:  
**Heelands Community Centre,  
Milton Keynes - up to RIBA Stage 3**

Drawing title:  
**Masonry - Ground Floor Layout**

RGL Project Ref: 20-0427	Scale@A1 1:50	Scale@A3 1:100
Specification(s): N/A		

Drawing Number: <b>200427-RGL-ZZ-GF-DR-S-710-0001</b>	Status: <b>D2-P02</b>
Project Originator: Zone-Level-Type-Rate-Classification-Number	Suitability-Revision
Issue Purpose: <b>TENDER</b>	