

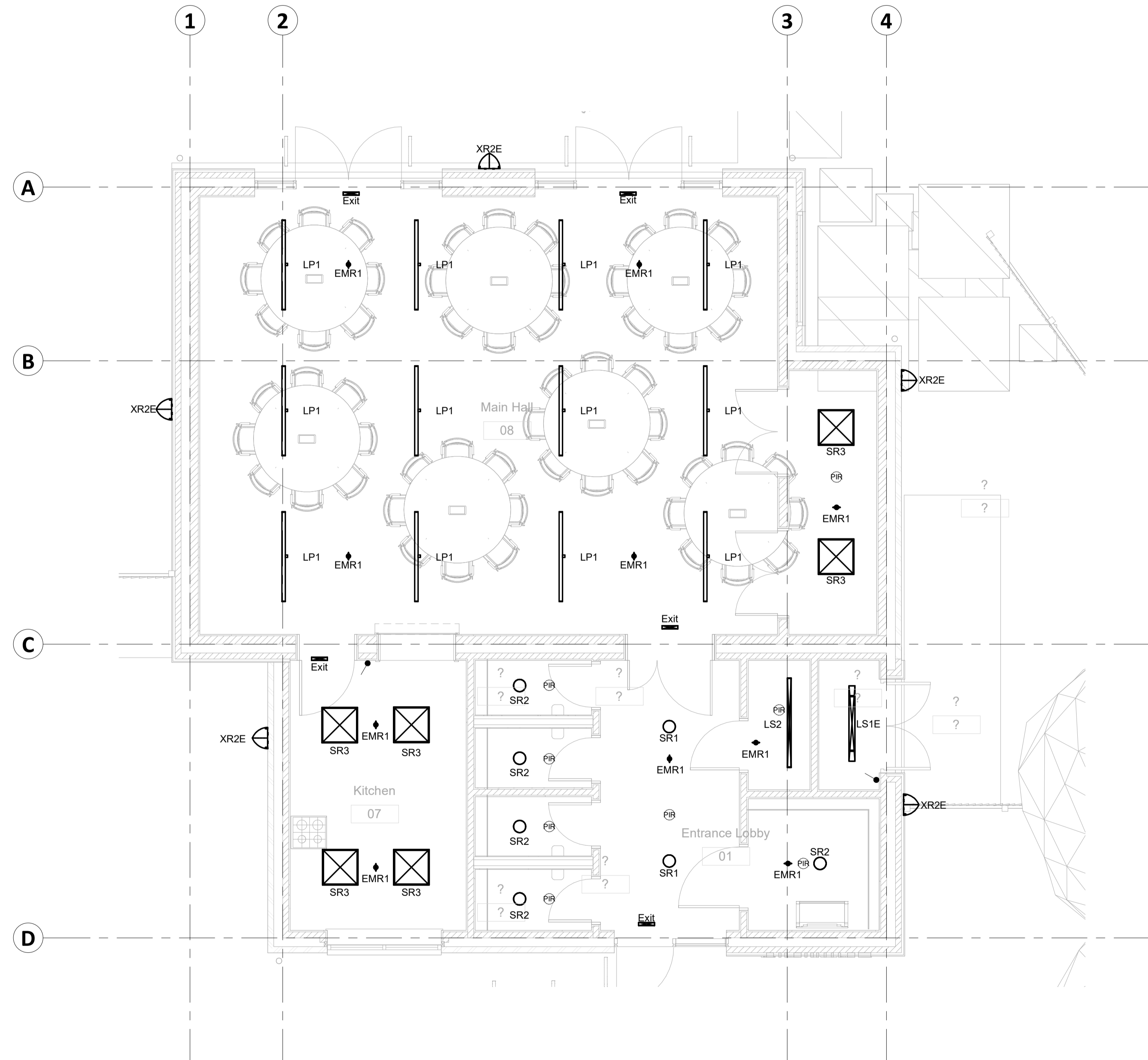
Notes

1. This drawing is to be read in conjunction with all the relevant contract documentation.
2. All dimensions are in mm unless otherwise stated. Dimensions to be checked on site prior to construction and any discrepancies reported to the Rolton Group Engineer.
3. Only drawings that indicate CONSTRUCTION as the issue purpose should be used for construction.
4. Any CONSTRUCTION status issue does not provide or imply approval or validation of any third party information.
5. Revision clouds are shown for assistance only, the whole drawing is to be checked for new/ amended information.
6. Not all hatches and linetypes shown on legends and keys may be present on this drawing. Drawings to be printed in colour by default, typical material colours are for clarity only.
7. All services are new unless stated otherwise.

DO NOT SCALE Copyright Rolton Group Ltd 2021
This drawing shall remain the copyright of Rolton Group Ltd.

Standard construction hazards that a competent contractor would be aware of have not been identified on this drawing. Risks that may not be immediately apparent are listed below.

Status	Date	Description	Dwn	Eng	Chkd	Veri
D2-P01	19.03.21	Issued for Tender	DEW	MSI	CWI	CWI
D2-P02	01.08.22	Revised Tender Issue	TC	TC	IN	IN



ROLTON GROUP
ENGINEERING THE FUTURE™
www.rolton.com 01933 410909

Project:
**Heelands Community Centre,
Milton Keynes - upto RIBA Stage
3 (Performance Design)**

Drawing title:
**Electrical Building Services
General and Emergency
Lighting Ground Floor**

RGL Project Ref: 20-0427	Scale@A1 1 : 50	Scale@A3 1 : 100
Specification(s): 200427-RGL-ZZ-XX-SP-U-95-0001		

Drawing Number: 200427-RGL-ZZ-GF-DR-E-73-0001	
Project Originator-Zone-Level-Type-Role-Classification-Number	
Issue Purpose: TENDER	Status: D2-P02 Suitability-Revision