



ROLTON GROUP  
ENGINEERING THE FUTURE™

# Heelands Community Centre, Milton Keynes

Installation : Heelands Community Centre, Milton Keynes

Project number : 20-0427

Customer :

Processed by : CW

Date : 02.08.2022

The following values are based on precise calculations performed on calibrated lamps and luminaires, and their configurations, whereby gradual, unavoidable deviations can occur in practice. All guarantee claims are excluded for the specified data.

This exclusion of liability applies irrespective of the legal grounds for both damages and consequential damages suffered by users and third parties.

---

-please put your own address here-



# 1 Luminaire data

## 1.1 Thorlux Lighting, Realta LED (RL19116)

### 1.1.1 Data sheet

**Manufacturer: Thorlux Lighting**

#### **RL19116 Realta LED**

Stylish IP66 wall mounted luminaires. Die-cast aluminium body with a choice of high efficiency glass or polycarbonate refractor. Less than 2% upward light.

Applications: Wide versions ideal for uniform pathway lighting for schools, hospitals, retail and other commercial environments. Area version ideal for general area lighting requiring a forward throw light distribution.

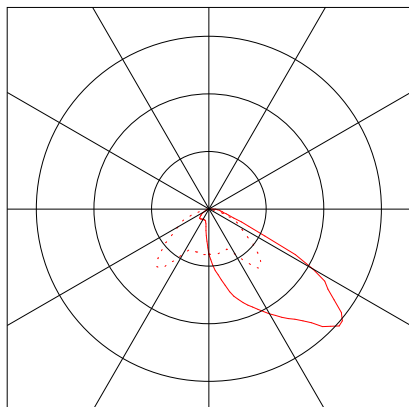
#### **Luminaire data**

Luminaire efficiency : 100%  
Luminaire efficacy : 123.48 lm/W  
Classification : A30 ↓99.5% ↑0.5%  
CIE Flux Codes : 32 74 96 100 100  
UGR 4H 8H : 30.7 / 25.9  
Power : 23 W  
Luminous flux : 2840 lm

#### **Equipped with**

Quantity : 1  
Designation : Realta LED - 20W  
- Area Distribution  
- 4000K  
Power : 20 W  
Colour : 4000  
Luminous flux : 2840 lm  
Socket : ---

Dimensions : 360 mm x 260 mm x 330 mm





# 1 Luminaire data

## 1.2 Thorlux Lighting, Realta LED (WRL19069)

### 1.2.1 Data sheet

Manufacturer: Thorlux Lighting

#### WRL19069 Realta LED

Stylish IP66 wall mounted luminaires. Die-cast aluminium body with a choice of high efficiency glass or polycarbonate refractor. Less than 2% upward light.

Applications: Wide versions ideal for uniform pathway lighting for schools, hospitals, retail and other commercial environments. Area version ideal for general area lighting requiring a forward throw light distribution.

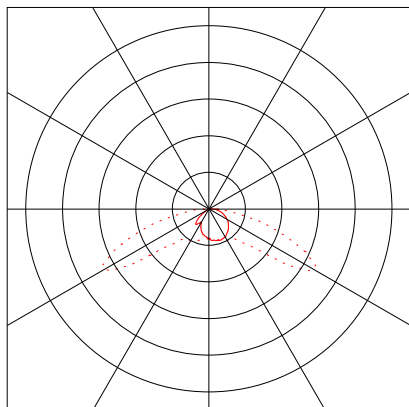
#### Luminaire data

Luminaire efficiency : 100%  
Luminaire efficacy : 35.45 lm/W  
Classification : A30 ↓98.3% ↑1.7%  
CIE Flux Codes : 26 60 91 98 100  
UGR 4H 8H : 18.9 / 28.2  
Power : 11 W  
Luminous flux : 390 lm

#### Equipped with

Quantity : 1  
Designation : Realta LED - 8W  
- Wide Distribution  
- Polycarbonate  
Power : 8 W  
Colour : 4000  
Luminous flux : 390 lm  
Socket : ---

Dimensions : 360 mm x 260 mm x 330 mm





## 2 Exterior 1(Copy of1)

### 2.1 Description, Exterior 1(Copy of1)

#### 2.1.1 Floor plan

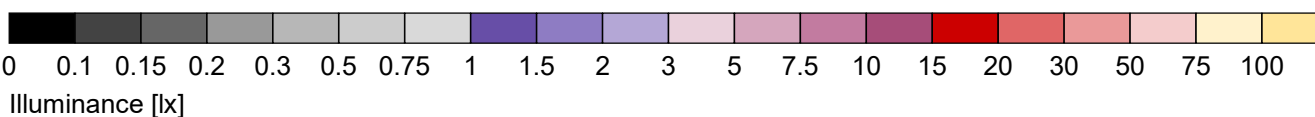




## 2 Exterior 1(Copy of1)

### 2.2 Summary, Exterior 1(Copy of1)

#### 2.2.1 Result overview, Calculation Surface



#### General

Calculation algorithm used	Average indirect fraction
Height of evaluation surface	0.00 m
Height (phot centre) [m]:	2.33 m
Maintenance factor	0.80

Total luminous flux of all lamps	7240 lm
Total power	90 W
Total power per area (170.42 m <sup>2</sup> )	0.53 W/m <sup>2</sup>

#### Illuminance

Average illuminance	Em	5 lx
Minimum illuminance	Emin	0 lx
Maximum illuminance	Emax	108 lx
Uniformity Uo	Emin/Em	1:--- (---)
Diversity Ud	Emin/Emax	1:--- (---)

#### Type No.Make

##### 3 2 Thorlux Lighting

	Order No. : RL19116
	Luminaire name : Realta LED
	Equipment : 1 x Realta LED - 20W - Area Distribution - 4000K 20 W / 2840 lm

##### 6 4

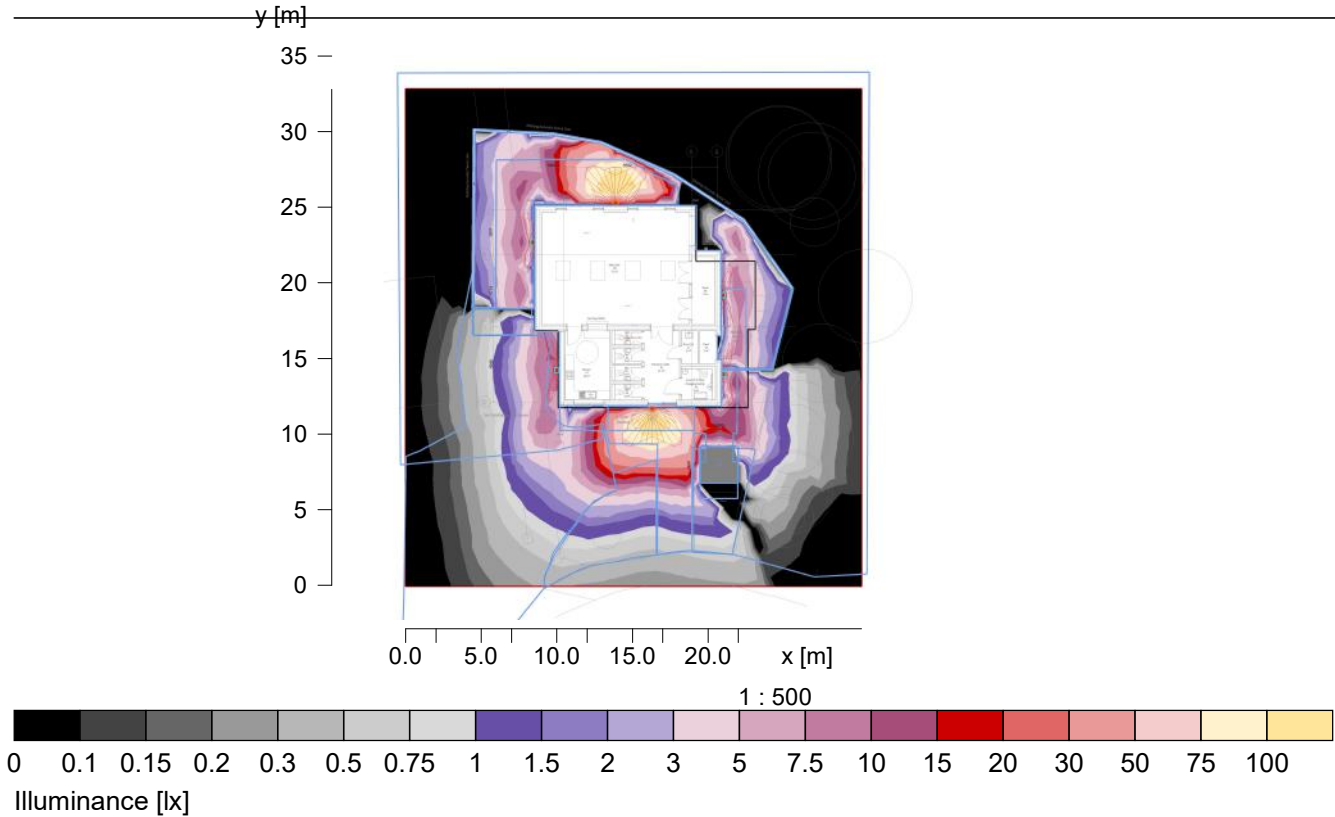
	Order No. : WRL19069
	Luminaire name : Realta LED
	Equipment : 1 x Realta LED - 8W - Wide Distribution - Polycarbonate Cover - 4000K 8 W / 390 lm





## 2.3 Calculation results, Exterior 1(Copy of1)

### 2.3.2 Pseudo colours, Calculation Surface (E)

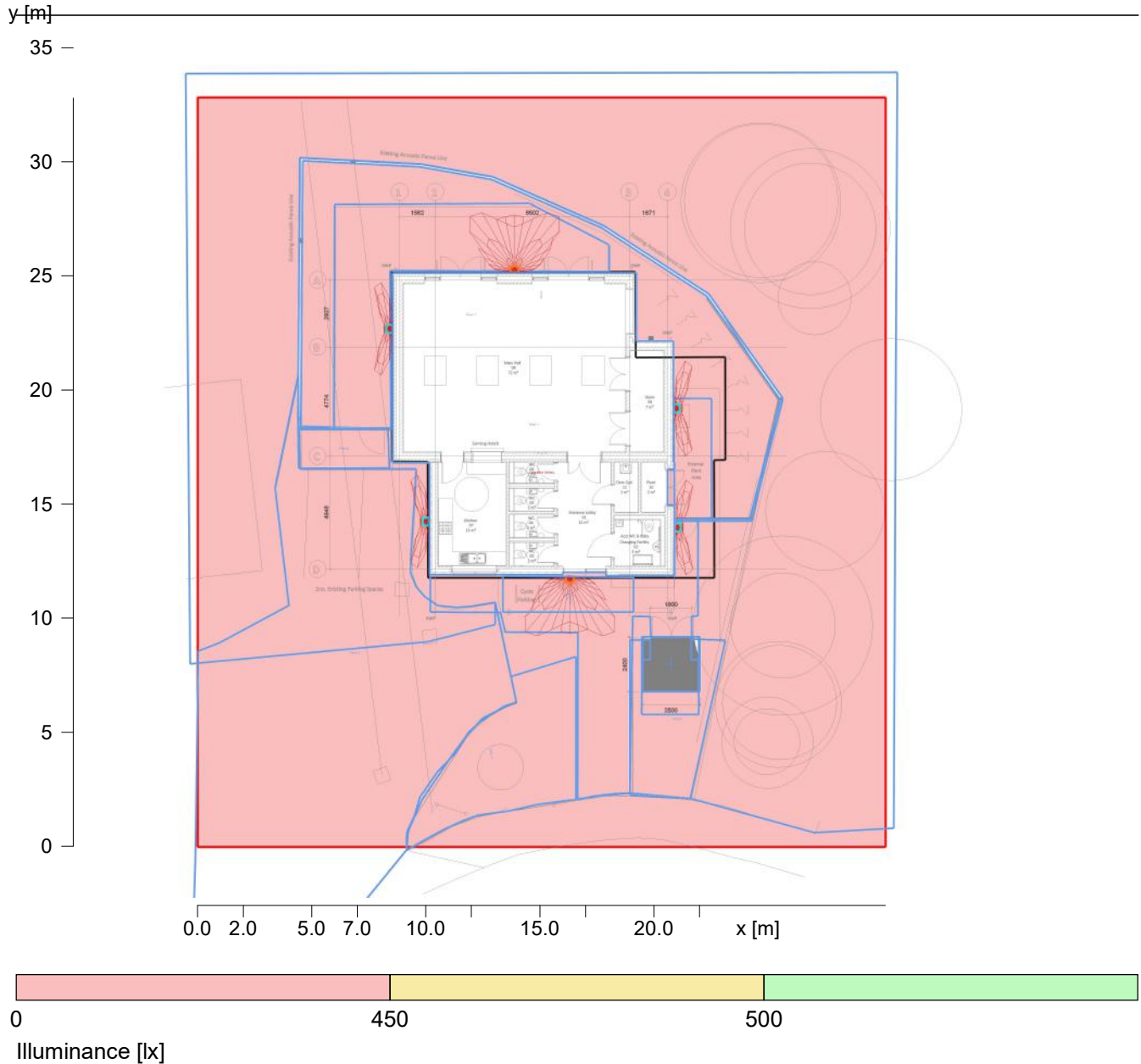


Height reference plane		: 0.00 m
Average illuminance	Em	: 5 lx
Minimum illuminance	Emin	: 0 lx
Maximum illuminance	Emax	: 108 lx
Uniformity Uo	Emin/Em	: ---
Diversity Ud	Emin/Emax	: ---



## 2.3 Calculation results, Exterior 1(Copy of1)

### 2.3.3 Boundary line, Calculation Surface (E)



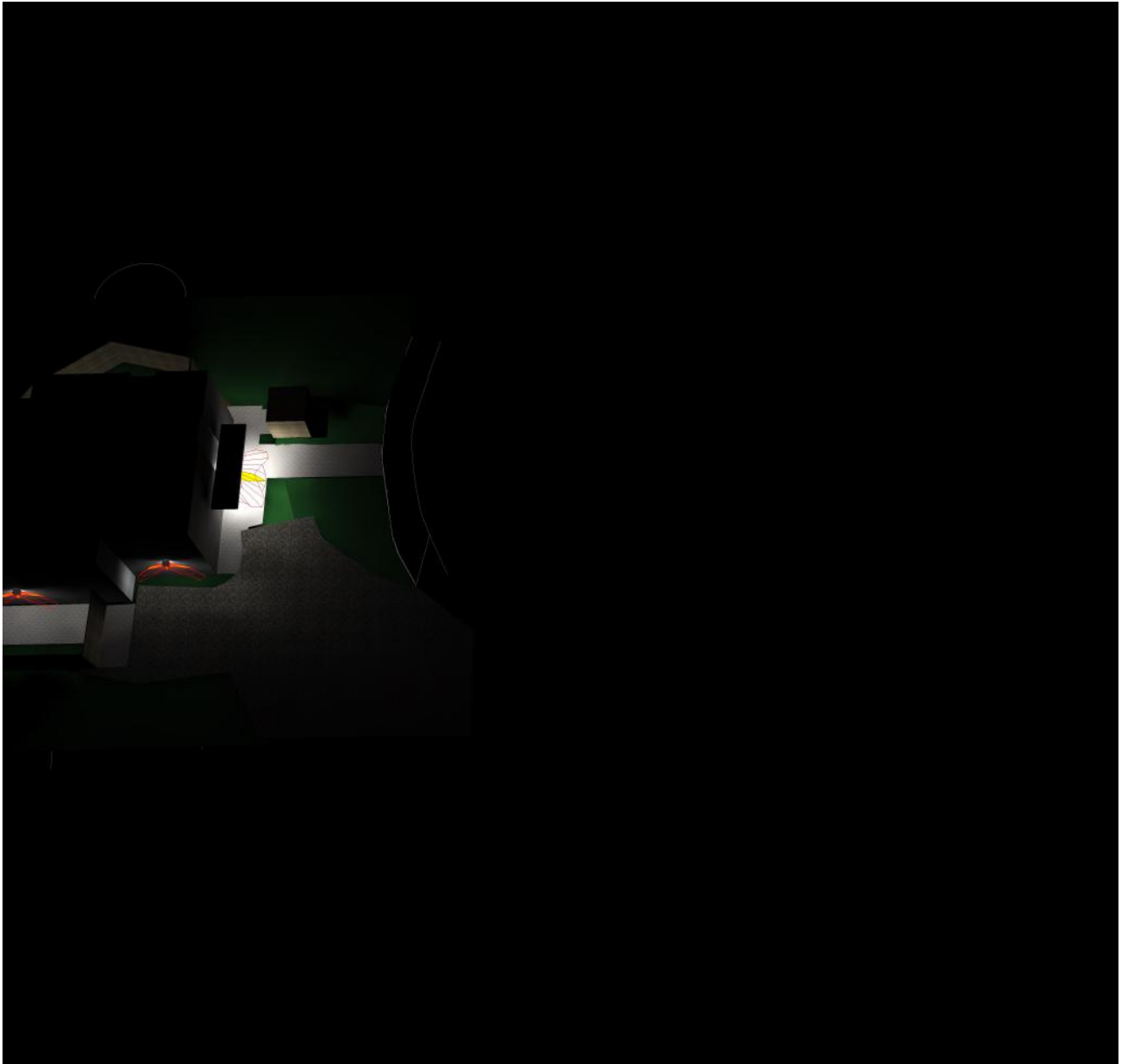
Height reference plane		: 0.00 m
Average illuminance	Em	: 5 lx
Minimum illuminance	Emin	: 0 lx
Maximum illuminance	Emax	: 108 lx
Uniformity Uo	Emin/Em	: ---
Diversity Ud	Emin/Emax	: ---





## 2.3 Calculation results, Exterior 1(Copy of1)

### 2.3.4 3D luminance, View 1





## 2.3 Calculation results, Exterior 1(Copy of1)

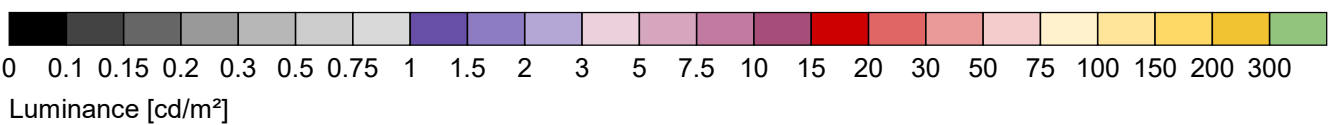
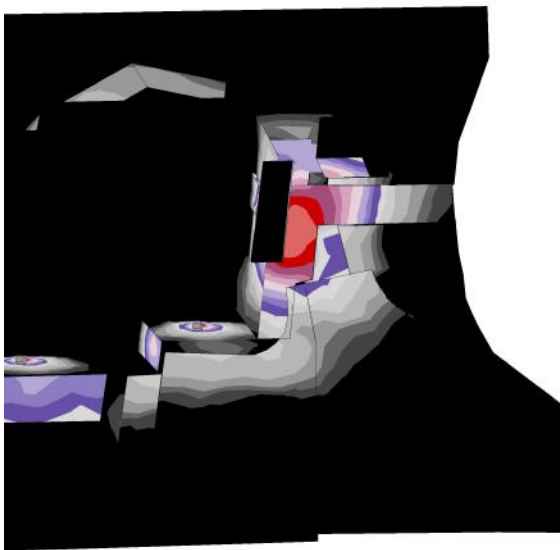
### 2.3.5 3D luminance, View 2





## 2.3 Calculation results, Exterior 1(Copy of1)

### 2.3.6 3D pseudo colours, View 1 (L)



Object : Heelands Community Centre, Milton Keynes  
Installation : Heelands Community Centre, Milton Keynes  
Project number : 20-0427  
Date : 02.08.2022



**ROLTON GROUP**  
ENGINEERING THE FUTURE™

## 2 Exterior 1(Copy of1)

### 2.4 Calculation results, Exterior 1(Copy of1)

#### 2.4.1 3D luminance (raytracing), Variable view

---



---

Luminance in the illustration:

Minimum: : 0 cd/m<sup>2</sup>  
Maximum: : 33.2 cd/m<sup>2</sup>

Artificial light calculation : Direct part, with 2 inter-reflections