

**Roof**  
Roof system, to achieve a U-value of 0.16 W/m²K.

- RT01 → **Roof Type 01**
- 12.5mm plasterboard
  - Vapour Control Layer
  - 10mm unventilated cavity
  - 200mm Flexi Rockwool Insulation between rafters or similar equal and approved
  - 50mm Hardrock Insulation or similar equal and approved over rafters between 50mm counter battens
  - Breather membrane
  - 30mm battens
  - 20mm mini Stonewold concrete slate tile or similar equal and approved

**Floor Types**  
Ground floor, to achieve a U-value of 0.18W/m²K

- FT01 → **Floor Type 01**
- 250mm Ventilated void
  - 225mm Beam and block as per structural engineers details
  - 150mm Rockfloor insulation or similar equal and approved
  - 75mm Screed

**External Wall Types**  
U-value of 0.22 W/m²K for all external wall types.

- EXWT01 → **Wall Type 01**
- 102mm Staplefield Blend Stuck brick - red to match existing housing or similar equal and approved
  - 150mm Rockwool full fill cavity batt or similar equal and approved.
  - 140mm Blockwork
  - 12.5mm Plasterboard on dot and dabs

- EXWT01 - A → **Wall Type 01A**
- 102mm Brickwork
  - 150mm Rockwool full fill cavity batt or similar equal and approved.
  - 100mm Blockwork
  - 12.5mm Plasterboard on dot and dabs

- EXWT02 → **Wall Type 02 - Horizontal Cladding**
- 20mm Cladding, dark grey cladding boards
  - 38mm Timber battens
  - 100mm Blockwork
  - 150mm Rockwool full fill cavity batt or similar equal and approved.
  - 140mm Blockwork
  - 12.5mm Plasterboard on dot and dabs

- EXWT03 → **Wall Type 03 - Vertical Cladding**
- 20mm Cladding, dark grey cladding boards
  - 38mm Timber battens
  - 100mm Blockwork
  - 150mm Rockwool full fill cavity batt or similar equal and approved.
  - 100mm Blockwork
  - 12.5mm Plasterboard on dot and dabs

**Internal Wall Types**

- IWT01 → **Wall Type 01**
- 12.5mm Plasterboard on dot and dabs
  - 100mm Blockwork
  - 12.5mm Plasterboard on dot and dabs

- IWT02 → **Wall Type 02**
- 12.5mm Plasterboard
  - 50mm Stud
  - 100mm Cavity
  - 50mm Stud
  - 12.5mm Plasterboard

- IWT03 → **Wall Type 03 - HPL Duct Panel System**

- IWT04 → **Wall Type 04**
- 12.5mm Plasterboard on dot and dabs
  - 140mm Blockwork
  - 150mm Rockwool full fill cavity batt or similar equal and approved
  - 100mm Blockwork
  - 12.5mm Plasterboard on dot and dabs

- IWT05 → **Wall Type 05**
- 12.5mm Plasterboard on dot and dabs
  - 140mm Blockwork
  - 12.5mm Plasterboard on dot and dabs

Do not scale from this drawing for construction or acquisition purposes. Responsibility is not accepted for errors made by others in scaling from this drawing. All construction information must be taken from figured dimensions only. All dimensions and levels must be checked on site and discrepancies between drawings and specification must be reported to GSSArchitecture.  
© Copyright GSSArchitecture

Ordnance Survey © Crown Copyright 2018. All rights reserved. Licence number GSS 100017356.

Map Data Copyright 2018 Google.

A 31/08/22 JAM CC GA Sections updated to suit revised layout. Draft tender issue.

Rev.	Date	Drawn	Check	Description

**GSSarchitecture**  
STUDIO B/2, 314 WITAN GATE WEST  
CENTRAL MILTON KEYNES, MK9 1EJ  
Telephone: 01908 010 030. Email: gss@gotch.co.uk,  
Web: www.gssarchitecture.com

Gloucester: 01452 525 019, Kettering: 01536 513 165,  
Harrogate: 01423 815 121, Newcastle: 01913 898 917

## TENDER ISSUE

**Project Title:**  
Community Centre, Heelands, Milton Keynes

**Client:**  
Bradwell Parish Council

**Drawing Title:**  
GA Sections

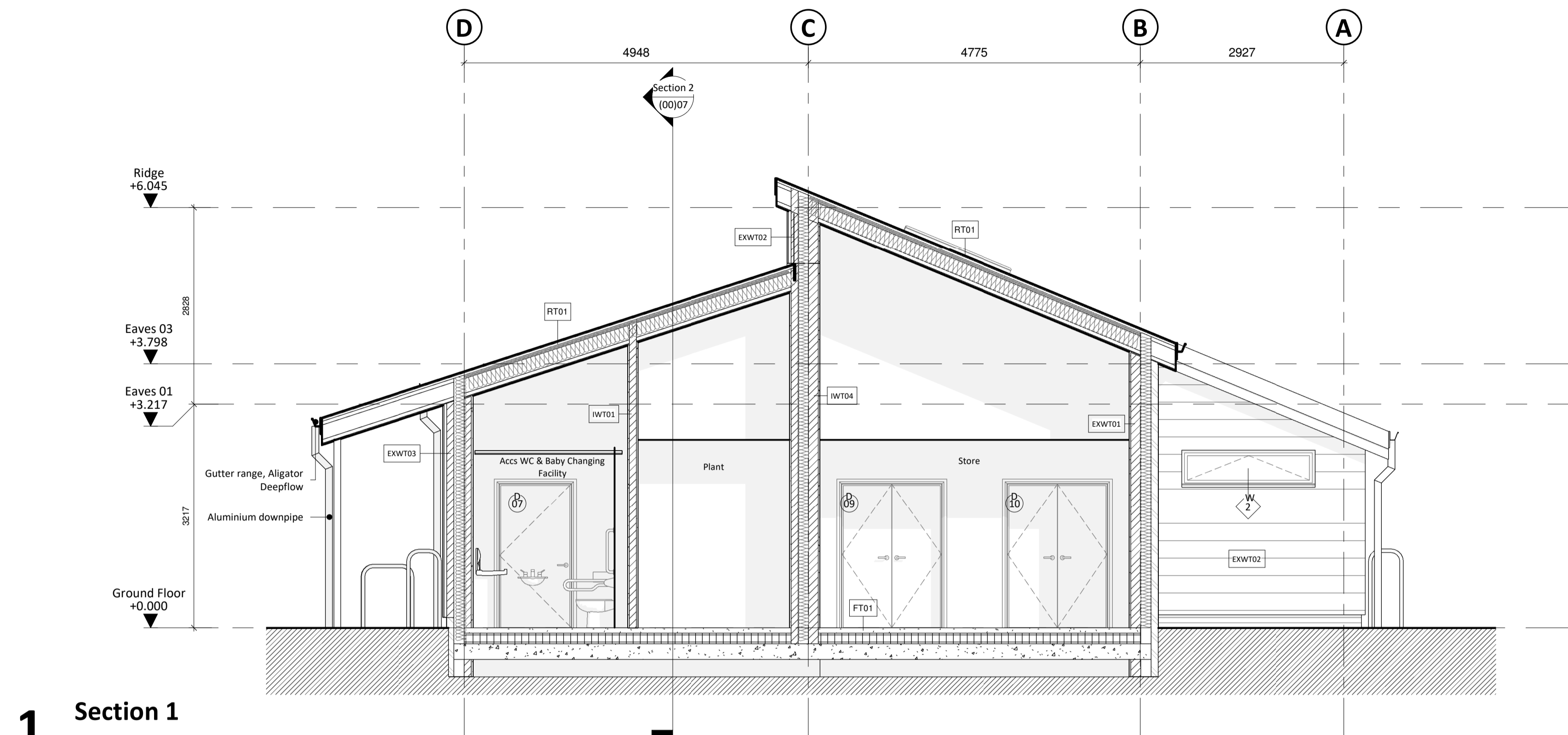
**File Number:** Project No. H105

**Drawn By:** S.K

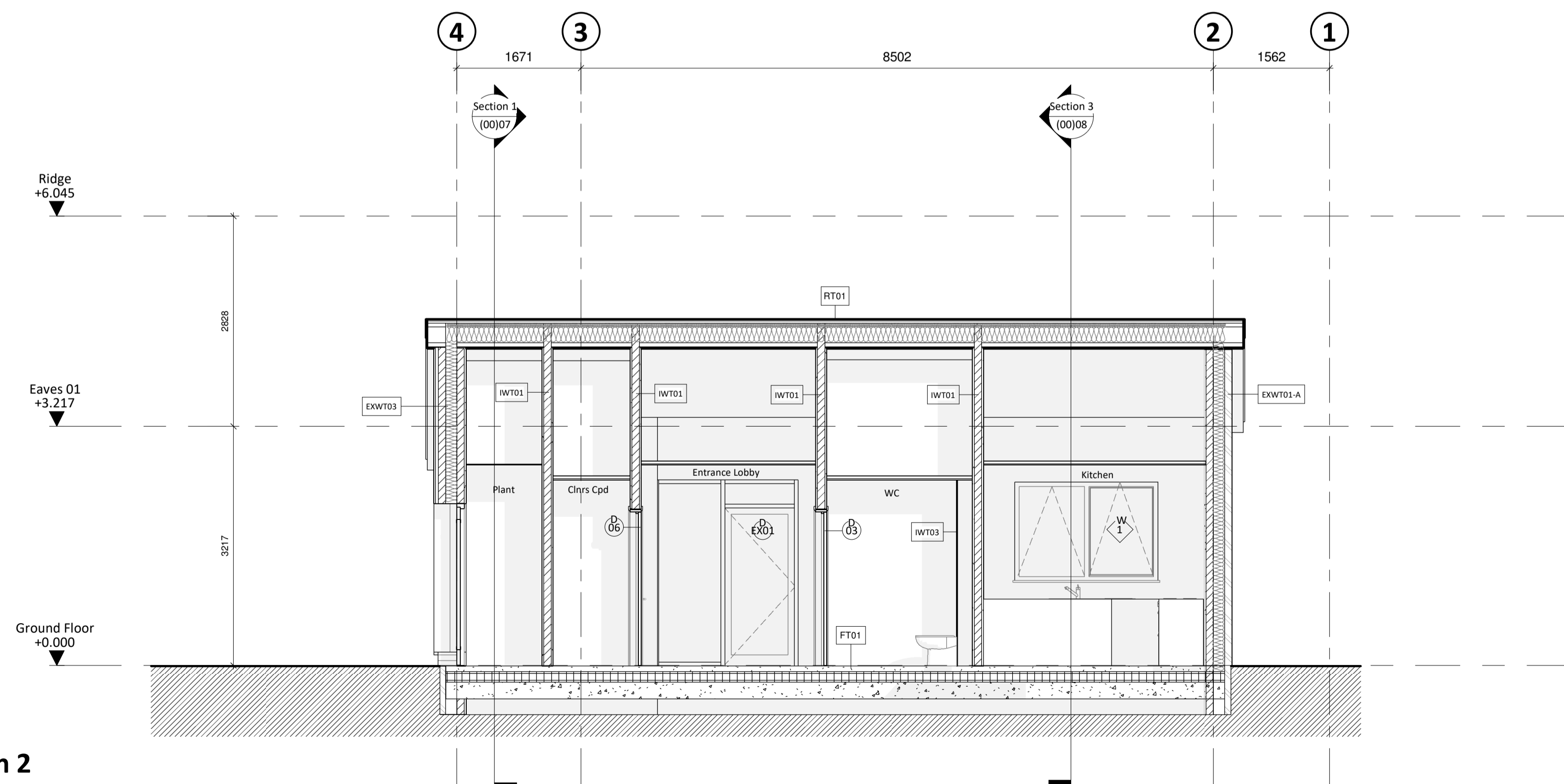
**Checked By:** CC

**Scale@A1:** As Indicated **Date:** 16/03/21

**Dwg No:** (00)07 **Rev:** A



**1. Section 1**  
**SCALE - 1 : 50@A1**



**2. Section 2**  
**SCALE - 1 : 50@A1**