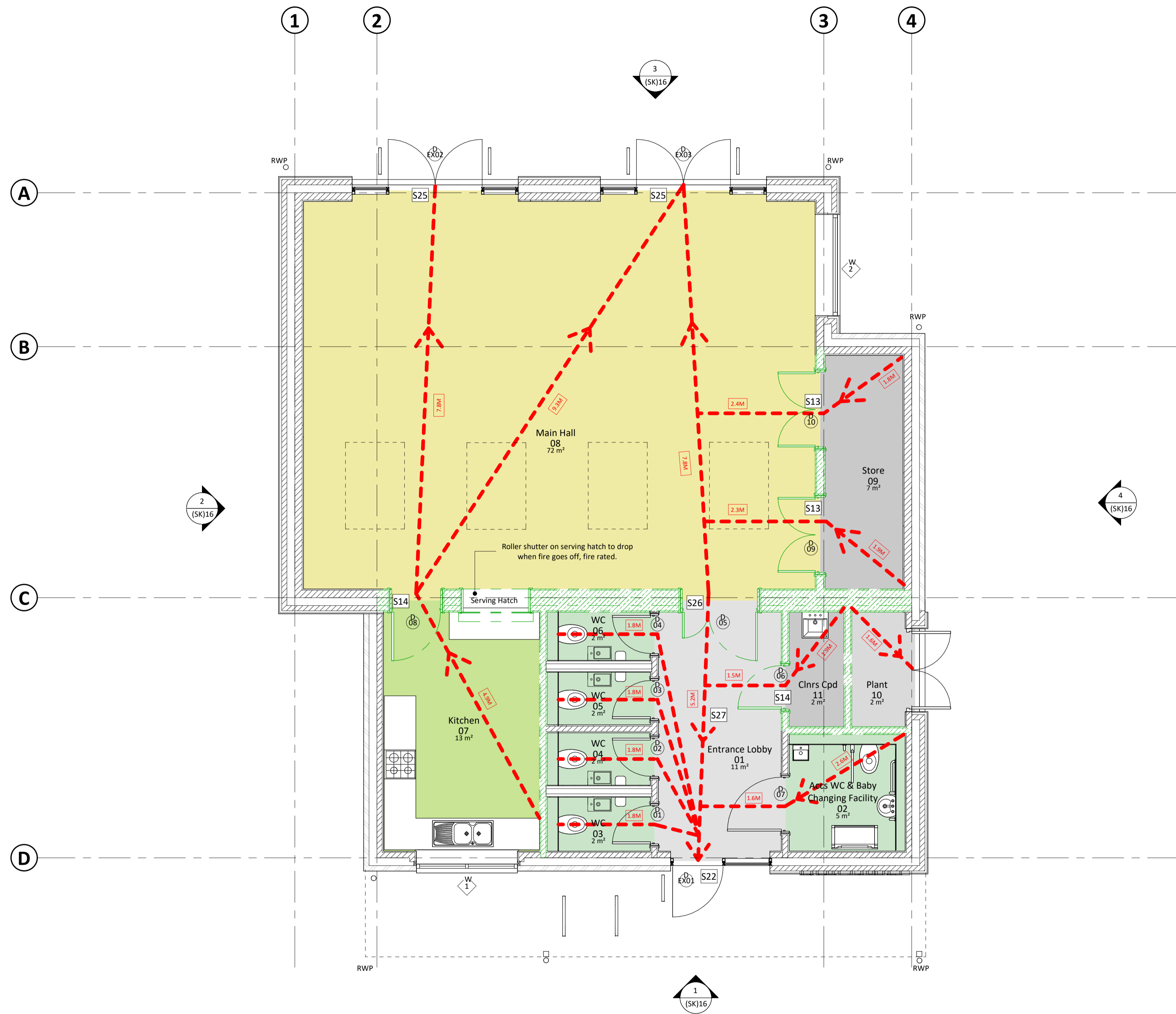


Do not scale from this drawing for construction or acquisition purposes. Responsibility is not accepted for errors made by others in scaling from this drawing. All construction information must be taken from figured dimensions only. All dimensions and levels must be checked on site and discrepancies between drawings and specification must be reported to GSSArchitecture.
© Copyright GSSArchitecture

Ordnance Survey © Crown Copyright 2018. All rights reserved. Licence number GSS 100017356.

Map Data Copyright 2018 Google.



1. Fire Strategy Ground Floor
SCALE - 1 : 50@A1

Legend:

- For door schedule refer to drawing (31)series & Spec. section L20
- All graphic symbols and abbreviations used are to BS 1635

Means of Escape	
	final exit
	escape route, direction to follow
	30 minutes compartment wall
	60 minutes compartment wall
	120 minutes compartment wall

Fire Precautions	
FD	Fire resisting doorset
S	Smoke resisting doorset
30	fire resistance of doorset, in minutes
SC	self-closing
VP	vision panel
SL	security lock
PB	pushbar door ironmongery

Safety Signs & Signals	
S13	"fire door, keep shut" (white on blue on white)
S14	"fire door, keep locked" (white on blue on white)
S21	"fire escape, keep clear" (white on blue on white)
S22	"fire exit" (white on green)
S25	"push bar to open" (white on green)
S26	Left/Right arrows as spec clause N17:150
S31	"fire extinguisher"
ES	Exit sign, internally illuminated
S27	Hanging direction arrows as spec clause N17:151

All signs to conform to BS 5499: Part 1

Smoke Ventilation	
SV	space requiring smoke ventilation
SV	smoke vent operated by emergency service door

- Location of all sounders, detectors, call points and other alarm devices to M&E drawings
- All emergency lighting to comply with BS 5266: Part 1, refer to M&E drawings
- Allow for Fire Barriers and cavity barriers as required in accordance with approved document B.

All access controlled doors are to fail open in the event of the fire alarm sounding.

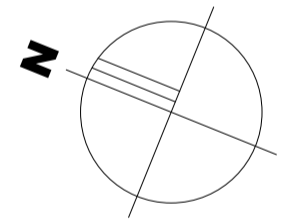
GF Doors	Fire Precautions
DEX01	SL
DEX02	SL, PB
DEX03	SL, PB
DEX04	
D01	
D02	
D03	
D04	
D05	FD, S, 30, SC, VP
D06	FD, S, 30
D07	
D08	FD, S, 30, SC, VP
D09	FD, S, 30
D10	FD, S, 30

A 31/08/22 JAM CC Fire Strategy Plan updated to suit revised layout. Draft tender issue.

Rev. Date Drawn Check Description

GSSarchitecture
STUDIO B/2, 314 WITAN GATE WEST
CENTRAL MILTON KEYNES, MK9 1EJ
Telephone: 01908 010 030. Email: gss@gotch.co.uk,
Web: www.gssarchitecture.com

Gloucester: 01452 525 019, Kettering: 01536 513 165,
Harrogate: 01423 815 121, Newcastle: 01913 898 917



TENDER ISSUE

Project Title:
Community Centre, Heelands, Milton Keynes

Client:
Bradwell Parish Council

Drawing Title:
Fire Strategy Ground Floor

File Number: Project No. H105
Drawn By: S.K
Checked By: CC
Scale@A1: As Indicated **Date:** 16/03/21
Dwg No: (68)04 **Rev:** A