



Bradwell Parish News

Issue: Spring 2024



Nahal Hormozi

Winner: John Newbury Photographic Competition 2024

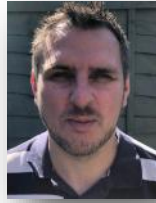
Parish Council magazine covering

**Heelands, Bradwell Village, Bradwell Common
Bradwell Abbey & Rooksley**

Bradwell Parish Councillors



Leon Gilpin
Heelands
Chair



Peter Brant
Bradwell Common
Vice Chair



Rose Davy
Bradwell Common



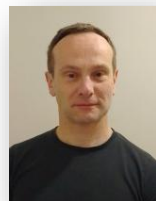
Darron Kendrick
Heelands



Caroline Godfrey
Bradwell Village



James Alexander
Bradwell Village



David Stuchbury
Heelands



Rex Exon
Bradwell Village



David Evans
Bradwell Common



Marie Bradburn
Heelands

Bradwell Parish Staff



Philip Farquharson
Parish Clerk



Karen Evans
Assistant to the Clerk



Peter Baldwin
Grounds Assistant



Peter Stamp
Groundsman



Jim Davison
Caretaker

Articles & Advertisements

Bradwell Parish Council welcomes articles and community information for inclusion within the newsletter. Please contact the Assistant Clerk: communications@bradwell-pc.gov.uk if you would like to discuss an article for future editions.

The Parish Council reserves the right to refuse any advertisement or article. The Parish Council does not endorse any services, products or political parties advertised in this newsletter and does not take any responsibility for the accuracy of articles provided to them from external sources. Deadlines for advertising in the parish magazine are below.

Article and Advert deadline for the Summer issue: **19 April 2024**

All articles and requests for advertising should be directed to the Assistant Clerk: communications@bradwell-pc.gov.uk

Office Contact Details

21 Glovers Lane, Heelands, Milton Keynes, MK13 7LW

Tel: 01908 321285; Email: clerk@bradwell-pc.gov.uk; Website: www.bradwell-pc.gov.uk

Office Opening Hours

Tuesday & Thursday: 10.00am – 4.00pm; Wednesday 2.30pm – 4.00pm



Welcome to the Spring edition of Bradwell Parish News.

As we look towards spring with optimism, it's also a good

time to reflect on winter past, and for me to look back on my first few months as a parish councillor. While I'm still a 'beginner' in many ways, I've learned a lot about the council and my role within it. And what's been really eye opening is how much the residents of Bradwell Parish genuinely care about the area and want to engage on a diverse range of topics.

Contrary to those who think that – in these super busy, high-tech times – 'community' is an antiquated ideal, I've seen that the opposite is true in many ways. People from all walks of life are crying out for community (provision and belonging) and are often doing their best to nourish and create it themselves.

During my several years in Japan, I learned that community plays a vital role in helping that country run so effectively – people generally know their role and carry it out diligently. Have we lost some of that here in the UK? Perhaps, but being involved in decisions central to the parish and hearing of the needs of residents and those trying to make a difference is encouraging – everyone has a role to play. Each role is vital in serving the common good.

Cllr David Stuchbury



Parish Council Meeting Dates

All meetings take place at Heelands Meeting Place, Heelands

| | |
|--|--------|
| Monday 15 April FC | 7.00pm |
| Monday 5 February FC | 7.00pm |
| Monday 13 May KGF & FC AGM | 7.00pm |
| Monday 20 May Annual Electors' Meeting | 7.00pm |

F & S (Finance & Staffing); FC (Full Council); KGF (King George's Field)

Clerk's Column

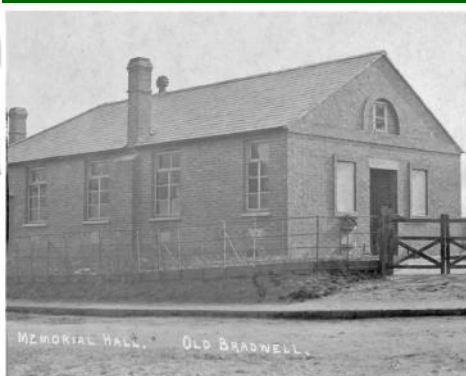
As I write this in February the weather is very wet, which is good for the pond in Bradwell Village and all the trees we have planted over the winter (thirty in Heelands and thirty in Bradwell village). All the trees are indigenous and mostly fruit-bearing; cherry, plum and pear, mixed in with some hornbeam and hawthorn. This ties in with the Parish Council's recently adopted Biodiversity Policy, where the Parish Council vouches to consider, where possible, improvements in biodiversity, and planting the sixty trees is a good start! Hopefully we do not have another drought in the summer so the trees can get their roots settled in.

Over the winter there has been hedging work done here and there, by the allotments off Winterburn in Heelands in particular, and a new dog bin placed there too, which gives the whole locale a make-over. On other matters we are coming up towards a new Parish Councillor term of office, which is every four years, and fingers crossed we receive the grant funding in order to revamp the King George's Field play area in 2024.

Philip Farquharson



Bradwell Memorial Hall Centenary



This year the Memorial Hall celebrates its Centenary and the Parish Council will be celebrating this by holding an exhibition in the hall.

Do you know anything about the history of the hall? Do you have any snippets of information or photos that you would like to share? We would prefer pre 1945 photos for their historical interest. If so please get in touch with Karen at communications@bradwell-pc.gov.uk or telephone 01908 321285.

Sports News



OPEN DAY

BRADWELL BOWLS CLUB

SUNDAY APRIL 28 FROM 11.30

Abbey Road, Bradwell Village, MK, MK13 9AR

Come along and see what bowls is all about. Join us for a cup of tea, coffee or something a little stronger and a chat. Try your hand at this most social of sports. Wear some flat-soled shoes or trainers, we'll supply the bowls. Whatever your age or expertise, you will be made most welcome!

LEAGUES | FRIENDLIES | PRACTICE SESSIONS (ROLL-UPS) | MENS, LADIES & MIXED GAMES | FREE COACHING
SOMETHING FOR EVERYONE!

NEW MEMBERS: FIRST SEASON HALF PRICE

Website: bradwellbowls.uk



Bradwell Sports and Social Club

We have recently heard a few new members comment that parish residents didn't know we were here, so let us introduce ourselves.

We are a family friendly member's club whose aim is to provide sporting opportunities for the village and events throughout the year.

We have Junior Football and Cricket teams, which provide a pathway to our adult teams.

Membership is priced at:

£10 Individual

£20 Family

£5 Over 65s

Opening Hours

Friday 19:30 – 23:00

Saturday 12:00 – 23:00

Sunday 12:00 – 22:30

For that price you get one of the cheapest bar prices in Milton Keynes, venue access for functions, events and so much more.

Come along to the club on Abbey Road if you are interested.



Parish Grant Updates

Did you know that Bradwell Parish Council is able to award grants to local groups to benefit parish residents? We do not give grants to individuals. The application forms are available via our website. This is a small snippet of what we have been able to support in recent months.

December 2023

Christmas Party for the Elderly: £500 towards the costs of the party. This group has been in existence for 40 years having been started in 1979 by the Mayor of Milton Keynes.



Parish News

Parish Community Halls for hire

The Parish Council manage the Bradwell Memorial Hall. If you would like to hire this space please do get in touch. The hall is a licensed venue. Heelands Meeting Place is also available for hire.

For more information on hiring either hall please visit the Parish Council website. The hire charges can be found on our website. T: 01908 321285 | E: admin@bradwell-pc.gov.uk or contact the Assistant to the Clerk.



Heelands Meeting Place
Glovers Lane, Heelands



Bradwell Memorial Hall
Victoria Rd, Bradwell

Time Out! at Bradwell Memorial Hall

We had a great time celebrating Christmas with some food. Everyone brought a dish to share with each other. Why not come along and join the group we have lots of fun.



Time Out! Is a Warm Spaces initiative and meets every Wednesday between 11am and 2pm. Everyone is welcome to attend.



Parish Coach Trip

Destination: Hastings

Date: July (day tbc)

Would you like to be part of the parish coach trip this year? Please keep a watch out on the noticeboards around the parish, on Facebook and our website for details of the trip and how to book a ticket. The cost of each ticket will be £10 and is for adults residing in Bradwell, Bradwell Village, Bradwell Common and Heelands only.

Tickets will be available to purchase online from 1 April and will be promoted on Facebook, www.bradwell-pc.gov.uk and the parish noticeboards.



eat the foods you love
and still lose weight!



Contact your local Slimming World Consultant and
join a friendly and super-supportive group today!

Milton Keynes
Church of Christ the Cornerstone
300-330 Saxon Gate West
Saxon Gate West
MK9 2ES

Thursdays at 9:00am & 10:30am
Call Rebecca on 07857 269 013

Thursdays at 5:00pm & 7:00pm
Saturdays at 8:00am & 10:00am
Call Ruth on 07947 834 432

slimmingworld.co.uk

#YesYouCanWithSlimmingWorld    



SCOTTISH DANCING

FREE TASTER SESSION

MONDAY 13 MAY
20.00 – 21.30

BRADWELL MEMORIAL HALL
VICARAGE RD
BRADWELL
MK13 9AG

T: 07877153259
E: intro2scd@gmail.com



Citizen's Advice Bureau

Citizens Advice Milton Keynes is a local charity that has been providing advice, support, and assistance to people across the city since 1972.

The bureau advises people on important matters affecting their daily lives such as:

Debt
Welfare Benefits
Housing

They can also help you if you're having problems at work or you're going through a relationship breakdown and can refer you to a range of other organisations even if your problem is something they can't deal with. For many people they are the first 'port of call' in resolving a range of issues that may be worrying them.

Citizens Advice has a large network of community-based outreaches across the city so that people can access advice, closer to where they live. Since 2017 and thanks to the support of Bradwell Parish Council, the bureau has been offering a fortnightly outreach service at **The Parish Offices in Glovers Lane, Heelands.**

This service is available to anyone living in
Bradwell
Bradwell Common
Heelands

To make an appointment, scan the QR code and complete the secure booking form.



citizens
advice

Milton
Keynes

Did you Know

Redways were originally going to be called Pedways, a cross between pedestrian and pedal.

1,000 cherry and cedar trees grow around the Peace Pagoda in memory of those killed in all wars.



Foot Health Practitioner
Jessica van Daltsen
MCFHP MAFHP

07513 741013

jessica@hellofeet.co.uk
www.hellofeet.co.uk

- Nail Correction of involuted/ingrown nails
- Thick nail reduction
- Hard skin & callus reduction
- Painful Corn(s)
- Cracked heels
- Verruca treatment
- Ingrown toe nail(s)
- Diabetics welcome
- Toenail Cutting and file

HOME VISITS AVAILABLE



School & Community Activities

Priory Common School

Royal Legion Poppy Appeal

During 2023, the school again supported the Poppy Appeal. Children were able to visit the school office to purchase poppy merchandise and provide a donation.



Milton Keynes Hospital

In addition to hosting a family picnic in the summer, raising funds for the hospital, children have also been making Christmas cards for patients. Last year the school received a thank you email from one of the recipients.

'I was in the hospital just before Christmas with an emergency operation. I was feeling wretched and not at all well after the op. I was pleased to receive this amazing card from the school, and it really lifted my spirits. Thank you so much.'

Harvest Festival

The school held a collection, with food item donations going to Milton Keynes Food Bank.

Ride High

Year 2 children took part in a sponsored trot, raising funds for the local charity.



Bradwell Abbey Scout Group

Bradwell Abbey Scout Group were very busy last year with the Beaver section, 6–8 year olds, the Cub section, 8–10 year olds and new to the Barn the Scout Section, 10–14 year olds.

The Beavers and Cubs have been taking part in lots of activities each week, from hikes and first aid to sewing skills and gardening. All the hard work paid off when we were able to award Chief Scout Bronze and Silver Awards – the highest badge to get.

At the local Scout campsite they joined 120 other Cubs from around MK to take part in a Medieval and Viking themed

camp, taking part in archery, mini toma-hawks, pioneering, campfires, songs and meeting 'The Vikings' to find out more about their



way of life. The Vikings taught the Cubs about money, weapons, writing and reading runes.

The Beavers took part in trips to RAF Hendon and helped with litter picking around the Abbey.

The older section has just started meeting and have already been climbing, camping and hiking and are now looking forward to learning new skills ready for the

summer.

We do need more help to run a varied programme and if you would like to help out, and even join in, please let us know and we can chat about opportunities within all the age groups from 6 – 100. Scouting is run 100% with volunteers, each giving time each week to encourage young people to grow and gain #skillsforlife. Contact: Kim.monro@mkscouts.org

The Churchyard at St Lawrence Church

Our Gardening Club has been making the grounds tidy and environmentally 'friendly', as part of a wider initiative called 'Eco Church', by trimming hedges and preserving the trees growing within them. An area has been planted with native trees including fruit



trees. Flowering shrubs have been established that look attractive and provide pollen, seeds and berries for birds, butterflies and bees. There is also a wilder area which is good for pollinating insects. This is cut back each autumn to encourage new growth. The grass is mown and we trim the edges except during 'No Mow May'. Bat boxes have been installed and we are considering installing swift boxes. We have been grateful for the donations of surplus flowering perennials. We are a small friendly group who would welcome more volunteers and have received favourable comments from the people who visit the Churchyard. Please contact us at bradwellchurch.com.

From the Community



You will need

| | |
|----------------------|----------------|
| Carrots | Babybel Cheese |
| Celery | Plastic pot |
| Hummus | Parsley sprigs |
| Hard boiled eggs | Mayonnaise |
| Mini chocolate chips | |

Easter Cookery

Carrot Hummus Cups

Use a toothpick to make a hole in the top of each carrot. Break off a small piece of parsley and put it in the hole. Place the carrots in little cups of hummus.

Bunny Faces

Push the carrot pieces into the top of the cheese for ears. Place the rest of the pieces on to make a bunny face.

Egg Chicks

Cut the egg at the 1/3 point. Carefully scoop out the yolk. Mash the yolk up with mayonnaise and scoop back into the larger egg portion. Top with the other 1/3 of the egg and add chocolate chips and carrots for the eyes and beak.



John Newbury Photographic Competition

The Parish Council would like to congratulate Nahal Hormozi for their beautiful photo which adorns the front cover of this issue.

Bradwell Community Award

Many thanks go to the winner of the Community Award, Lyn Drinkwater for their contribution to our community, especially the Pre-School!

Jokes

What do you call a blind dinosaur?

A do-you-think-he-saw-us.

What did one ocean say to the other?

Nothing. It just waved.

Explore the History on your Doorstep

Milton Keynes Museum will be doing what it does best, and stepping back in time for the return of its popular History Festival (May 11 & 12).

Marvel at the clever Romans and walk alongside soldiers from WWII – and that's just for starters.

They will be taking turns in the arena, and mingling with visitors. It's a wonderful opportunity to engage in some fascinating learning, or simply have some fun.

The Museum will be open during half term (May 27–31) with lots of arts and crafts activities supplementing the usual attractions, and then the Victorian Weekend (June 8 & 9) will shine a light on those most industrious of people.

A word of warning though; vagabonds and pickpockets will also be present, so be on your guard – they might pick a pocket or two!



A brand new family event is being introduced to the Museum events programme, with a visit from preschool television favourite, Bluey (June 15).

Follow the Museum on its socials for updates: FB & Twitter: @mkmuseum and visit miltonkeynes-museum.org.uk

