



Bradwell Parish News



Julie, used with kind permission

Issue: Winter 2023

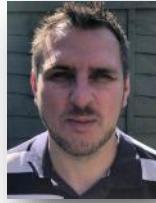
Parish Council magazine covering

**Heelands, Bradwell Village, Bradwell Common
Bradwell Abbey & Rooksley**

Bradwell Parish Councillors



Leon Gilpin
Heelands
Chair



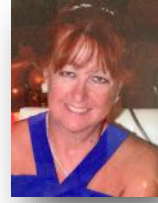
Peter Brant
Bradwell Common
Vice Chair



Rose Davy
Bradwell Common



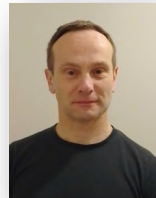
Darron Kendrick
Heelands



Caroline Godfrey
Bradwell Village



James Alexander
Bradwell Village



David Stuchbury
Heelands



Rex Exon
Bradwell Village



David Evans
Bradwell Common



Marie Bradburn
Heelands

Bradwell Parish Staff



Philip Farquharson
Parish Clerk



Karen Evans
Assistant Clerk



Peter Baldwin
Grounds Assistant



Peter Stamp
Groundsman



Jim Davison
Caretaker

Articles & Advertisements

Bradwell Parish Council welcomes articles and community information for inclusion within the newsletter. Please contact the Assistant Clerk: communications@bradwell-pc.gov.uk if you would like to discuss an article for future editions.

The Parish Council reserves the right to refuse any advertisement. The Parish Council does not endorse any services, products or political parties advertised in this newsletter and does not take any responsibility for the accuracy of articles provided to them from external sources. Deadlines for advertising in the parish magazine are below.

Article and Advert deadline for the Summer issue: **5 January 2024**

All articles and requests for advertising should be directed to the Assistant Clerk: communications@bradwell-pc.gov.uk

Office Contact Details

21 Glovers Lane, Heelands, Milton Keynes, MK13 7LW

Tel: 01908 321285; Email: clerk@bradwell-pc.gov.uk; Website: www.bradwell-pc.gov.uk

Office Opening Hours

Tuesday & Thursday: 11.00am – 4.00pm; Wednesday 2.30pm – 4.00pm



Welcome to the Winter edition of Bradwell Parish News.

The clocks have now turned back and winter is upon us. The last few months have, as usual, been very busy for the Parish Council. We are proud to partner St Lawrence Church with their 800 year celebrations and particularly the very successful fete held on Glebe Field in August. Much planning and hard work went in to ensure an enjoyable day was had by all. I would like to thank the committee including local residents who contributed to the fete's success. In July, the Parish Council operated a subsidised coach trip for local residents on a day trip to Brighton, the sun shone for us and those who came along reported having a fabulous day out.

In June, the Parish Council completed the necessary Charities Commission paperwork for the Bradwell Memorial Hall, becoming the sole managing Trustee. This will ensure that the long-term future for this iconic and important venue is secure. Huge thanks go to the previous Trustees for their sterling work in managing this asset for many years.

The Parish Council continues to work hard to support our excellent sporting clubs and grant fund many local initiatives including support for the forthcoming free Christmas event to be held at the City Discovery Centre at Bradwell Abbey on Sunday 3 December. There will be lots of activities and Santa will be in attendance in his grotto for children to visit.

We at the Parish Council work on your behalf and we welcome comments and feedback on how we are doing. Finally, I would like to close by wishing you all a very happy and peaceful Christmas.

Ellr Caroline Godfrey

Parish Council Meeting Dates

All meetings take place at Heelands Meeting Place, Heelands

Monday 15 January FC	7.30pm
Monday 5 February FC	7.30pm
Monday 12 February F & S	7.00pm
Monday 4 March FC	7.30pm

F & S (Finance & Staffing); FC (Full Council); KGF (King George's Field)

Clerk's Column

Summer has come and gone, though as I write in early October it feels summer-like, with high daytime temperatures and no leaves turning yet. Parish Council business is fairly frantic at the moment.

In June the Parish Council became sole managing trustee of the Bradwell Memorial Hall. Investment is happening at the premises, to retain it in good condition for residents to enjoy as a community facility.

High on the agenda is the annual allotment rent collection, and there are several new tenants who we wish the best of luck to in their cultivating future. Budget-setting occupies the Parish Council at this time of year, which is very important and includes the Parish Council's planned projects for the next financial year. This includes revitalising the King George's Field play area, which will only happen on some scale if we receive the grant funding so fingers crossed. The Parish Council sponsored MK Play Association, 5 On It for basketball and MKDons SET for football to provide activities and sports for our young residents.

Over the summer, Karen Evans, Assistant to the Clerk, organised the coach trip to Brighton for adults.

Philip Farquharson



Welcome David Stuchbury & Darron Kendrick

The Parish Council would like to extend a warm welcome to their two new councillors.

Darron says: I joined the Parish Council in July 2023, and I am looking forward to being part of things in the parish. Some residents may recognise me as a Ward Councillor for Bradwell Common, in Central Milton Ward.

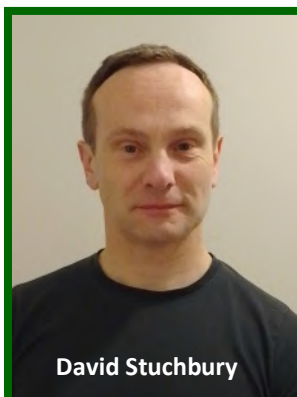
I work in education in my full-time vocation and enjoy my job very much. My leisure time interests are music, history, classic cars, and sport.

Like my colleagues, I am here to help residents so, please get in touch with me if you think I can help you with anything, in any way at all.

David says: I am a Milton Keynes local, originally from Woburn Sands I still live in Central Milton Keynes with my wife Hitomi and two boys. I am a teacher by profession with a keen interest in sport and youth development.



Darron Kendrick

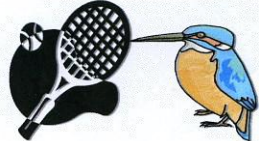


David Stuchbury

Sports News

Old Bradwell Tennis Club

Since the beginning of our tennis club playing year, there have been 661 matches and 913 hours of court usage. The newly resurfaced courts have attracted lots of new members and renewed memberships – which is fantastic – all are welcome at our small tennis club.



Membership Type	Fee
New member joining fee	£5.00
Single (over 18)	£44.00
Family	£82.00
Over 60s	£30.00
Junior (over 14)	£25.00
Junior	£20.00

These fees are for a full tennis membership year. Our club's aim is to be one of the cheapest tennis venues to play at in Milton Keynes and to

attract people from our local Parish and further afield as well. We are always on the look out for new members of with or without tennis experience. Jason, our tennis coach, is available to give lessons.

If you are interested in becoming a member, contact Cathy on 07947 029709 or 07714 598126.



Old Bradwell Bowls Club



Bradwell have had a good season, our new members are settling in really well. President's Day was a great success, everyone dressing as brightly as possible to raise money for Willen Hospice.

This year we are raising funds to buy the club its own defibrillator.

Our annual game against the cricket club has now become a firm favourite.

We enter the winter months with various activities to see us through until next season and don't forget, we are always on the lookout for new members.

Parish Grant Updates

Did you know that Bradwell Parish Council is able to award grants to local groups to benefit parish residents? We do not give grants to individuals. The application forms are available via our website. This is a small snippet of what we have been able to support in recent months.

April 2023

RSPCA: £660 towards supporting residents with vet bills, food and

rehoming pets.

May 2023

St Lawrence Church 800 Celebration: £1000 Towards fete expenses.

Friends of Conniburrow Children's Centre: £270 Towards a summer visit to Whipsnade Zoo.

July 2023

YMCA: £500 towards asset based employment support.

Bradwell Charitable Trusts: £1,000 towards legal fees.

September 2023

Milton Keynes City Discovery Centre: £1,000 towards the Christmas event, *Angels at the Abbey*.

Summerfield School PTA: £1,200 towards outdoor equipment for new SEND unit.

Parish News

Parish Community Halls for hire

The Parish Council have recently taken over the management of Bradwell Memorial Hall. If you would like to hire this space please do get in touch. The hall is a licensed venue. Heelands Meeting Place is also available for hire.

For more information on hiring either hall please visit the Parish Council website. The hire charges can be found on our website. T: 01908 321285 | E: admin@bradwell-pc.gov.uk



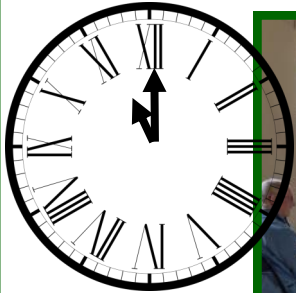
Heelands Meeting Place
Glovers Lane, Heelands



Bradwell Memorial Hall
Victoria Rd, Bradwell

Time Out! at Bradwell Memorial Hall

We recently held a MacMillan Coffee Morning to raise funds. We had a great turn out of visitors and managed to raise £125. Thank you to everyone who came and enjoyed the event.



Time Out! Is a *Warm Spaces* initiative and meets every Wednesday between 11am and 2pm. Everyone is welcome to attend.



Special Community Award

Today the Parish Office staff were pleased to be able to handover a community award to retired Heelands School Headteacher, Lesley Barnard.



Coach Trip to Brighton

In July the Parish Council organised a trip for parish residents to visit the seaside. We all had a great time! Keep a look out for the next one!



John Newbury *Photography* Competition 2024

Entry requirements:

- Open to all Bradwell Parish residents
- Must be an amateur photographer
- All photos to be of Bradwell Parish
- All photos to have been taken from April 2023 onwards



£50 prize!

Closing date for entries: **19 February 2024**

Send entries to: communications@bradwell-pc.gov.uk

Bradwell Parish Council reserve the right to use the photos in their social media

NOMINATE YOUR COMMUNITY HEROES!

Tell us who you think is so inspiring that they deserve a Community Award. Who has gone above and beyond for Bradwell Parish? Who has gone the extra mile for the community?

Bradwell Parish Council
Closing date for nominations: 19 Feb 2024
Nominations to: communications@bradwell-pc.gov.uk



To be awarded at the

Annual Electors' Meeting
13 May, 7.30pm
Heelands Meeting Place

£50 prize

Bradwell Parish Council Office
21 Glovers Lane, Heelands
Milton Keynes, MK13 7LW

BRADWELL CHARITIES

A Christmas Gift for the over 70s

Residents of Bradwell Parish, who are 70 years old or older and are in need, are welcome to apply for a small monetary gift for Christmas.

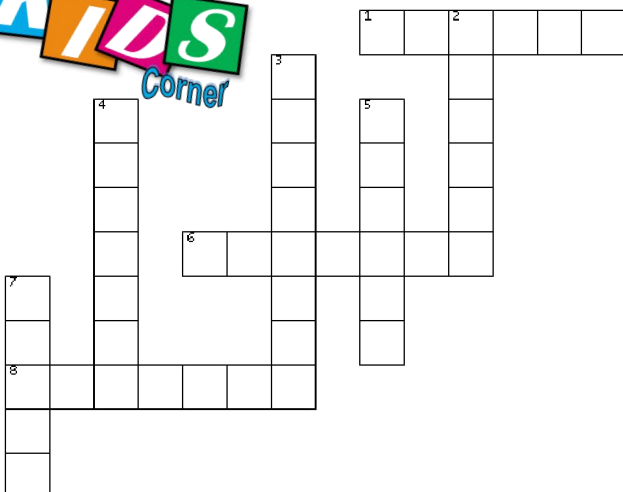
These gifts derive from local charitable trusts set up in the 18th century.

If you are over 70 and would like to apply, please email your name, date of birth and address to rosedavy@hotmail.com or by post to Bradwell Charities, 5 Westbury Lane, Newport Pagnell, MK16 8JA

If you do not have email you can telephone 01908 418058, but if you leave a message please speak slowly and clearly.



Previous recipients need not apply.



Summer Parish Activities

We had great weather, although a bit wet at times, for the sports and play activities. All these activities were funded by Bradwell Parish Council. We do hope your children enjoyed them!

MKDONSSET provided the football, 5 On it Foundation the basketball and MKPA the craft.

Basketball:

Over 50 boys and girls attended the sessions, all had a great time, with several returning from previous years.



Football:

There were a mixture of ages, but they all seemed to have lots of fun!

MKPA sessions:

Heelands: 189
Bradwell Village: 116
Bradwell Common: 157

Most of the children were from the parish.

Across

1. They grow on trees
6. These are big and orange vegetables
8. A month of the year

Down

2. The season between summer and winter
3. A month of the year
4. The time to gather fruit and vegetables
5. The fruit from the horse chestnut tree
7. They grow on oak trees

Local Schools

Heelands School & Summerfield School – The Blue Sky Federation

The Governing Boards of Heelands School and Summerfield School recently consulted on the proposal to form a federation. The consultation was open between 9 May and 26 June 2023.



Following the consultation, the Governing Boards of both schools unanimously agreed to proceed with the federation. The federation will be known as The Blue Sky Federation and the inaugural Federation Board meeting was held in September 2023.

Priory Common School

Priory Common School were recently nominated as finalists in three categories at the Milton Keynes Education Awards. These awards reflect the hard work and commitment shown by the staff, pupils and families in providing a safe and purposeful learning environment for our children. Congratulations to everyone at Priory Common.



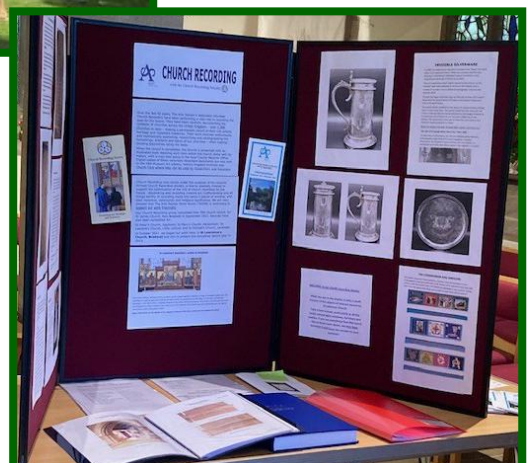
The children, staff and families of Priory Common have been supporting the NHS and in particular Milton Keynes Hospital. They have organised and run a range of activities to support this cause and raised an incredible £356.60 from a recent picnic event which they were able to donate to the hospital.



Community Activities

Bradwell 800 Church Fete

The fete, sponsored by Bradwell Parish Council was a great success with many local people attending. The sun held out until the very end when we then had to battle the elements getting the gazebos down! There were stalls with cakes, books, a tombola, face painting, raffle, Scouts, beer tent, ice cream and a burger van, plus an exhibition in the church. The fete raised approximately £1500 for the church.



From the Community

Angels at the Abbey

Milton Keynes City Discovery Centre's much-loved Angels at the Abbey event is back again this year and thanks to funding from Bradwell Parish Council it's bigger and better than ever! On Sunday 3rd December at Bradwell Abbey there's the chance for kids to visit Santa and be entertained by a snow queen puppet show. Adults will love browsing the Christmas market stalls for essential gifts. A carol concert by local schools is the highlight of the day – please let us know if your school would like to take part! There will also be musical entertainment from a Brass Band

and the delights of a live snow globe. Visitors can warm themselves with mulled wine and other refreshments. This local, community-focused event is a lovely chance to get in the Christmas spirit and support MKDC, and it's all free! (A small charge applies for visiting Santa.) For more information, or to get in touch, visit the website at <https://www.mkcdc.org.uk>



Christmas at MK Museum



The countdown to Christmas is on, and Milton Keynes Museum will be turning back the clock and celebrating Yuletide with the return of its popular *A Victorian Christmas* – which is set to be bigger and better than ever!

Visitors can eat, drink and be merry with freshly roasted chestnuts to nibble on, and mulled wine, or a non-alcoholic alternative served for just 20 shillings a glass, and you'll want to be in tune if you fancy joining in with the Carols in the Parlour.

All of the usual Museum attractions will be dressed for the festivities, and volunteers will be suitably attired too.

There will be more seasonal surprises; purchase Christmas sweets in the Post Office and get those stocking fillers and quirky gifts sorted at the Country Market (Saturday & Sunday only).

Children will experience real magic – with snow in the Street of Shops, and special Christmas crafts, and bookings are now being taken to visit Santa in his grotto.

“Come and spend a little time with us this December and we guarantee your Christmas will be merry and bright!” promised Museum Director Bill Griffiths.

For more details on *A Victorian Christmas*, and for tickets to visit Santa's Grotto (pre-booking essential) visit miltonkeynesmuseum.org.uk