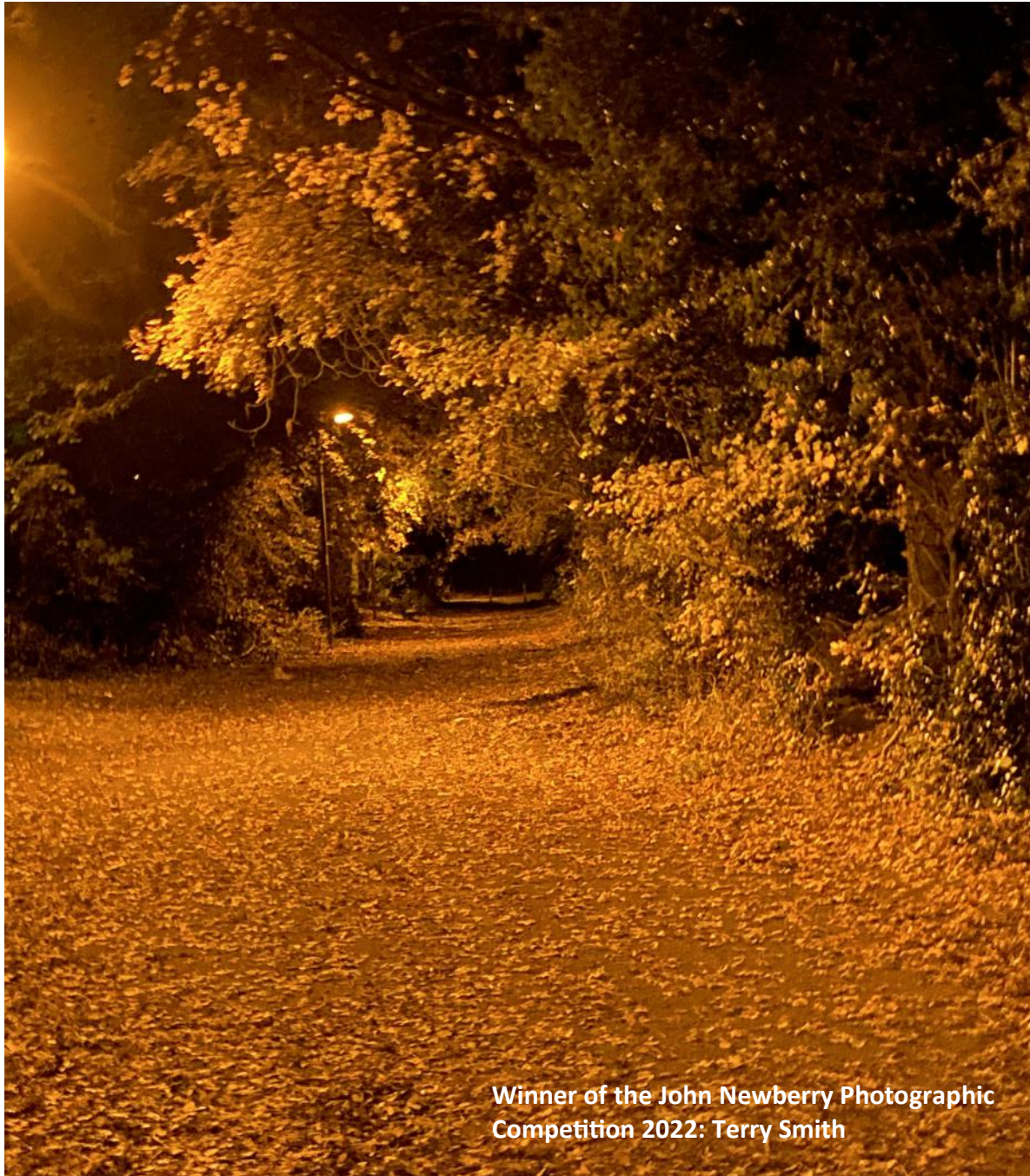




Bradwell Parish News

Issue: Spring 2022



Winner of the John Newberry Photographic
Competition 2022: Terry Smith

Parish magazine covering

Heelands, Bradwell Village, Bradwell Common,
Bradwell Abbey & Rooksley

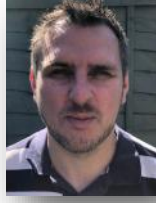
Bradwell Parish Councillors



Leon Gilpin
Heelands
Chairman



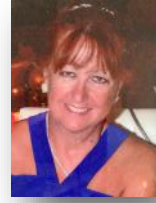
Marie Bradburn
Heelands



Peter Brant
Bradwell Common



Vacancy
Heelands



Caroline Godfrey
Bradwell Village



James Alexander
Bradwell Village



Robin Bradburn
Heelands



Rex Exon
Bradwell Village



David Evans
Bradwell Common

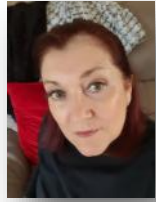


Rose Davy
Bradwell Common
Vice Chairman

Bradwell Parish Staff



Philip Farquharson
Parish Clerk



Teresa Wales
Assistant Clerk



Karen Evans
Assistant Clerk



Peter Baldwin
Grounds Assistant



Peter Stamp
Grounds Person



Tony Hull
Caretaker

Office Contact Details

21 Glovers Lane, Heelands, Milton Keynes, MK13 7LW

Tel: 01908 321285; Email: clerk@bradwell-pc.gov.uk; Website: www.bradwell-pc.gov.uk

Office Hours

Daily: 9.30am – 4.00pm

Photographs courtesy of Rob Jones



Hello

I've been a parish councillor since 2017. I really enjoy helping the local community.

The parish council wish to give their heartfelt condolences to any member of the parish that has lost a member of their family or a friend to the COVID Pandemic.

As we move through the year, vaccinations are now bringing the numbers that are hospitalised and unwell down hopefully we can all move forward to a more normal life.

We were very sad to hear of the recent passing of Harold Atkins, who was a longstanding member of the parish council before his retirement in May 2021.

There are lots of interesting articles in this issue and we hope that you will enjoy reading them.

Many congratulations to the Photographic Competition winner, Terry Smith, and Community Award winners, Joe Downard; Brian Fisher and Min Chun.

The parish council are always willing to assist the local community in any way so if you are planning a community celebration for the Jubilee please let us know as we may be able to help.

We would like to give a very warm welcome to our new Clerk, Philip Farquharson, who joined the parish staff in the middle of March 2022.

Councillor David Evans

Harold Atkins

The parish council are sad to announce the recent death of a much respected retired councillor, who died suddenly at home at the beginning of January.

Harold retired from the parish council in May 2021 after serving for a great many years. During the 1990's he was the Chair of the parish council.

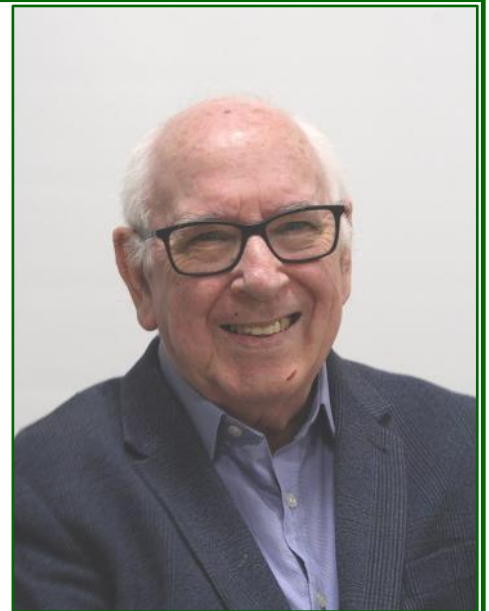
Prior to being a councillor he was the parish clerk working at first from home and then from the parish office on Heelands. Harold was interested in everything that

went on within the parish and was a fount of information. If you couldn't find an answer to something, Harold always knew the answer.

One of his latest interests was with the pond regeneration at Abbey Field, Bradwell Village.

He will be sorely missed and our deepest condolences go out to all his family and friends.

He Served the Community!



Parish Budget Update

Bradwell Parish Council has set the budget for next year. Our share of the council tax has frozen for the fourth year running, meaning that the council tax in our parish remains significantly lower than the Milton Keynes average. The parish council tax for the typical household in the parish (Band B) in 2022/23 will be £42.06. More details about what your council tax pays for is available on the parish website.



Parish Council Meeting Dates

All meetings take place at Heelands Meeting Place, Heelands

Monday 4 April	7.30pm
Monday 9 May Annual Meeting	7.30pm
Monday 23 May Annual Electors' Meeting	7.30pm
Monday 6 June	7.30pm

Articles & Advertisements

Bradwell Parish Council welcomes articles and community information for inclusion within the newsletter. Please contact the Assistant Clerk: communications@bradwell-pc.gov.uk if you would like to discuss an article for future editions.

The Parish Council reserves the right to refuse any advertisement. The Parish Council does not endorse any services, products or political parties advertised in this newsletter and does not take any responsibility for the accuracy of articles provided to them from external sources. Deadlines and charges for advertising in the parish magazine are below:

Article and Advert deadline for the July issue: **20 April 2022**

Quarter page (92mm x 65mm): Charities (local): free; Charities (other): £25; Commercial: £50

8th page (92mm x 65mm): Charities (local): free; Charities (other): £12.50; Commercial: £25

All articles and requests for advertising should be directed to the Assistant Clerk: communications@bradwell-pc.gov.uk

Community News

Medical Detection Dogs

Some of the world's most powerful bio sensors, with fluffy coats and waggy tails, live on your doorstep and need homes while they undergo their training. If you're interested in giving them board, lodgings and cuddles while they learn how to save lives, read on...

The world leading charity, Medical Detection Dogs, trains dogs to save lives using their amazing sense of smell and is based in Milton Keynes.

Bio Detection Dogs learn the odour of diseases like cancer, Parkinson's and malaria which will lead to early, less invasive diagnosis of some of the world's biggest killers.

Medical Alert Assistance Dogs work with individuals with complex health conditions such as Type 1 diabetes and severe allergies, giving them a 5–10 minute warning that a medical crisis is about to happen. Clients have no awareness that their condition is about to take hold, but the dogs detect a change in their odour.

Most recently, the charity has been training dogs to detect COVID-19 as a wet-nosed line of defence against the virus. The first phase of the project proved that dogs can detect the odour with an accuracy of up to 94% – significantly higher than the other immediate testing method, the LFT. The dogs are now screening people in real world settings such as workplaces and conferences and the project is at its final validation stage. It only takes a second and there is no need for an unpleasant swab. We know which we'd prefer...

The charity is appealing to its nearby community for volunteer socialisers to look after the young dogs while they are trained. Claire Baker, Volunteer Manager would love to hear from you if you would like to give one of their beautiful puppies or younger dogs a caring and loving home. This unique role involves attending regular puppy classes, following positive dog training methods and taking the dog to visit lots of different environments. You will need to be at home most of the day and be able to travel to our Centre in Great Horwood on a regular basis.

If you are interested in hearing more please email volunteering@medicaldetectiondogs.org.uk



Bradwell Bowls Club

Another Good Year!

2021 turned out to be a good year for the bowls club, Covid aside of course. We ran our games in a more relaxed fashion than pre Covid, with no formal meals and speeches to conclude. We offered tea/coffee/biscuits etc halfway through and kept the bar open and encouraged visitors to socialise afterwards whilst still observing Covid protocol. The formula went down well with all.

We gained many members over the season and finished the year with above average attendances for our winter activities, which included a bingo evening in aid of Alzheimer's adding over £300 to the £400 plus raised during the summer for our President's chosen charity*. We shall carry this on into 2022.

The new season is nearly here and our Open Day will be Sunday May 8, come and join us.

*A set of bowls auctioned by one of our members has raised a further £220, our total has now exceeded £900.



Supermarket Recycling

Did you know that most of the big supermarkets are now taking soft plastic for recycling at their stores.



Scrunch it up tight – if it pings back, it's a useful indicator that it's soft plastic and can be recycled.



Sainsbury's, Tesco, Co-op and Morrisons are taking part nationally but please do check to see which supermarkets are taking part before you head out with your bags of soft plastic!

Milton Keynes Museum

Discover a world of playtime at Milton Keynes Museum

The Story of Childhood exhibit is one of the attractions new to Milton Keynes Museum in 2022.

Two rooms are being dedicated to the history of playtime, which features primitive and rudimentary items through to the decidedly more tech orientated toys of recent decades.

'We all remember our first teddy bear, or associate a special toy with a particular time,' said Bill Griffiths, director of Milton Keynes Museum.

'Some of us will remember playing with tin toys, collecting stamps or matchboxes, winning a game of Connect 4, or getting busy with a 'pretend' record player.'

'The Story of Childhood will evoke brilliant memories for absolutely all ages – whether you grew up with Andy Pandy or the Teenage Mutant Ninja Turtles!' Bill promised.

'The exhibit shows how times have changed for our young people over the decades; in Victorian times it was expected that children would begin work while still quite young and contribute to the family income,' Bill explained.

'Once upon a time, children were allowed to roam the countryside in safety, on a journey of discovery. But now more than ever, we supervise our children. The Story of Childhood is a fond trip down memory lane, while also challenging visitors to think about the bigger picture; in trying to protect children, have they lost too many freedoms?'

Have an egg-cellent Easter with a visit to MK Museum!

The annual egg hunt returns April 15–18

Milton Keynes Museum is currently open every Wednesday, Saturday & Sunday, 10.30am–4.30pm. For further information visit miltonkeynesmuseum.org.uk

Bradwell Village School

We have had a busy time at Bradwell Village School recently. Our termly Creative Weeks were very successful. The theme was museums and each year group has decorated their shared area according to their chosen museum. We have a fantastic whale hanging in Year 4 in honour of the Natural History Museum and Year 3 had a Roald Dahl characters dress up day to celebrate the Roald Dahl museum. There were some amazing outfits, including the Oompa Loompas complete with orange faces and green hair! Year 6 had experience of star gazing in an inflatable planetarium to enhance their learning about space and the Space Centre while Year 5 carried out some science experiments as they focused on the Science Museum. Our children continue to work hard in lessons and outside of the classroom our Strictly dancers continue their practice for the Strictly Dance competition later in the year.



Bradwell Church

Easter is relatively late this year, being celebrated on 17 April. But it's good to have something positive to look forward to. I'm



sure we all hope for a better spring, praying that COVID is on its way out, and that we can enjoy greater freedoms with the lessening of restrictions. Easter strikes a note of hope for Christian people, as we celebrate the resurrection of Christ. At Bradwell Church we are already planning our celebrations and invite you to join us. Please keep an eye our church website for up to date and detailed information: <https://bradwellchurch.com/>

Friday April 15, 3pm Devotional – Rev Paul Smith

Sunday April 17, 10.30am Easter Day service – Rev Peter Dudeney



For further information about Bradwell Parish Council please visit our website: www.bradwell-pc.gov.uk

Parish Grants

Friends of Conniburrow Children's Centre

In December a group of mums and children went off to visit Mead Open Farm which was partly funded by our parish, with a grant of £273. They had a great time and sent in a Thank You card with some lovely comments, here are just a few.



MK Discovery Centre COVID Project

In December the parish council awarded a grant of £1000 to create a multi-generational music project. This was to connect communities through song, physical performances, online streaming, documentary filming. Originally this was due to take place at the beginning of December but unfortunately it had to be postponed due to Covid and schools having to withdraw, but it has been rescheduled for September 11. More public information and a relaunch of the project will be going out soon!

Bradwell Common Planters

The parish council are expecting to hear about our application for funding to revamp the planters at the end of March, so by the time you get your copy of the newsletter, we may know the outcome. I am hoping that they give us the go ahead as the planters are looking rather unkempt and in need of updating.

I am hoping to do some planting with the children from Summerfield School again this year and will need your help. When your child brings home a pot with a seed in it, please help them look after it. A bit of water and some sunshine will be enough to get it growing. When they bring the plants back into school, we will plant them out. Last year the flowers made the area look so much nicer.



Cllr Rose Davy

MK Hospital Charity

In December the parish council awarded a grant of £250 to pay for distraction devices for children undergoing procedures in the community.

Jubilee Celebrations

Are you thinking of running a community event? If so, the parish council may be able to help with funding it.



Summerfield School – Defibrillator Pads

At the end of January replacement defibrillator pads were delivered to Summerfield School, which were funded by our parish with a grant of £245. Mrs Daley, the Deputy Head and her support team were shown how to replace the pads if needed.

The school will add the defibrillator to the British Heart Foundation National Defibrillator Network circuit.

The defibrillator is accessible during term time and school hours.



Old Bradwell Tennis Club

Just before the COVID-19 Pandemic hit the Tennis Club were awarded £1000 grant funding for coaching and advertising. The tennis club are offering free tennis coaching as below.

Tennis Lessons

Tuesday 19 & Wednesday 20 April
09.30–10.00: 5–8 years
10.00–11.00: 8–10 year
11.00–12.00: 10 years above

Racquet and balls will be provided

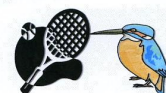
Quiz Evening

Friday 22 April, 7.30 pm £10.00 per person, 6 adults to a team. Adults only please!

Raising funds for tennis court resurfacing!

If interested, please contact

Cathy: 07947 029709



Parish News

Heelands Meeting Place

If you would like to book Heelands Meeting Place for a party/event, please do get in touch with us. The hire charges can be found on our website. We currently have spaces at the weekend and on Thursday evenings.

T: 01908 321285 E: admin@bradwell-pc.gov.uk



Bradwell Village Pond

Work commenced on transforming the pond into a wildlife haven particularly suitable for Great Crested Newts on Monday 24 January and was completed within two weeks. We have had the right hand side of the pond filled in to kill off the invasive weed, crassula helmsii. The left hand side has been dug out and extended slightly. The pond has been left to fill naturally with water, which may take up to a year. The right hand side will be sown with wild flowers sometime in March or April when the top half of Abbey Field is converted into a wild flower meadow area. We will also be reinstating a short fence around the top half of the pond for health and safety reasons and also to deter dogs from swimming in the pond.

The pond work is being funded and overseen by The Newt Conservation Partnership (NCP) who create and manage habitat for the Midlands Nature Space District Licensing scheme. For more information or if you have questions please contact Pete Case from NCP at: pcase@newtconservationpartnership.org.uk or admin@bradwell-pc.gov.uk

The meadow works are jointly funded by MK Council and Bradwell Parish Council.



A local resident has created a YouTube video, which can be found here https://youtu.be/zNYNAkj6K_s

Keep Britain Tidy

This year the national Keep Britain Tidy campaign is running between 25 March – 10 April. The parish are organising a litter pick on Saturday 9 April. If you are interested in joining in with this activity please can you let the office know. All equipment will be provided.

Email: communications@bradwell-pc.gov.uk



Robin's Children's Centre

As you can see the centre has lots of activities suitable for young children and their parents. If you are interested in attending any of them please contact them directly on 01908 318 758.

Monday

Bumps & Babies 10:00am – 11:15am

Sensory Room 1.00pm – 2.00pm

Tuesday

Story & Song Time 9.00am – 10.00am

Outreach session at Ashbrook School, Two Mile Ash, MK8 8NA

Drop-In 09:00 – 09:30am

Story & Song Time 09:30 – 10:00

Robin's Walk 11:00am – 12noon

Wednesday

Singing Sacks (CLMK course) 9.30am – 11.30am

Language Café 1.00pm – 2.00pm

Thursday

Bumps & Babies 10:00am – 11:15am

Messy Play

(Last Thursday of the month) 10.00am – 11.15am

Sensory Room 1.00pm 2.00pm

Friday

Stay & Play 10.00am – 11.30am

Sensory Room 1.00pm – 2.00pm

Photographic Competition Winner!

We are pleased to announce that this year's winner is Terry Smith. Their photograph adorns the front of this newsletter.

Community Award Winner!

We are pleased to announce that this year's winners are Joe Downward, Brian Fisher and Min Chun.

All of the awards will be presented to the winners at the Annual Electors' Meeting on Monday 23 May.

Congratulations to all the winners!

Diana's Gardening service:

- Seeding and Planting;
- Trimming and Pruning;
 - Weeding;
- General light gardening maintenance;

Tel: 07928142708
email: Ds.Garden.Service@gmail.com

Twinkle Tots Pre School

Charity number 1027459
URN 141880
Contact us 01908 311911

We are a small, friendly and very happy Pre-School, with an extremely warm and welcoming team of qualified and dedicated staff who are committed to providing an excellent Pre-School service.

We have been a registered charity since 1993 and are members of the Pre-School Learning Alliance.

Children can start Pre-School at the age of 2 years. We have spaces for up to 32 children per session. We accept 2 year and 30 hour funding and tax free child-care vouchers. We are open between 9am and 3pm, Monday to Friday, during term time.

Heelands Meeting Place, Glovers Lane, Heelands, Milton Keynes, MK13 7PG

E: twinkletotsoffice@gmail.com

T: 01908 311911

For any other information please call or email.

I can help you with...

- ✓ Cutting toenails
- ✓ Hard skin (Callus)
- ✓ Thick nails
- ✓ Fungal nails
- ✓ Painful corns
- ✓ Cracked heels
- ✓ Ingrown nail(s)
- ✓ Diabetic foot care

JESSICA VAN DALFSEN
FOOT HEALTH PRACTITIONER

07513 741013

E	L	J	L	D	W	M	F	K	R	K	Y	M	E	O
A	M	I	H	G	O	I	C	P	V	A	A	C	H	J
S	S	M	D	S	Y	I	G	D	W	P	D	E	T	C
T	Y	P	S	O	H	N	I	X	Y	U	I	S	H	P
E	U	O	R	C	F	D	N	W	K	V	L	Y	I	T
R	L	P	X	I	P	F	S	U	S	V	O	V	M	J
B	K	I	V	O	N	C	A	N	B	U	H	Y	H	C
R	J	L	D	P	G	G	C	D	L	Y	G	F	L	I
H	Z	U	X	Y	S	H	E	B	I	J	V	V	M	I
R	N	T	W	H	C	R	A	M	F	W	Y	A	Q	A
H	B	X	K	T	L	T	G	R	E	W	G	P	P	D
E	P	S	P	Q	X	C	W	G	E	E	X	R	B	F
B	I	R	T	H	Y	B	A	B	E	N	I	U	V	S
I	G	E	E	Q	U	I	N	O	X	L	D	M	W	M
A	P	W	R	J	Z	O	N	M	B	S	G	Q	T	Q

APRIL	CHICK	HOLIDAY
BABY	DAFFODIL	LIFE
BIRTH	EASTER	MARCH
BLOSSOM	EGG	NEW
BUDS	EQUINOX	SPRING
BUNNY	HARE	TULIP